

Route 88 Effects on the Town of Westport.

Life time observations

By: Claude A. Ledoux.

1-28-2018

Two events of the last Century that had the greatest impact on the Town of Westport.

- **1st.** World War II. Following the Depression Westport's population joined the rest of the Country in the War effort;
 - Supplying Men and Women for military and other services.
 - **Turning up its numerous farms to production of "wall to wall" food and Agricultural supplies.**
- The US war efforts and sacrifices not only SAVED the WHOLE WORLD from disastrous dictatorships. AND, also FED the WHOLE WORLD which was in near total disarray.

2nd. **Route 88 construction coupled with; State takeover of W. Horseneck and Gooseberry,** accompanied by state edict to destroy centuries old Mill Ponds in the headwaters of the River's East Branch.

**PATH OF RT 88
THROUGH
WESTPORT**



What justifications prompted rt. 88 construction?

- The Carol and Edna Hurricane devastations of 1954 encouraged State control vs what had been uncontrolled public development.
- Heavy beach traffic thru Westport Point, Sanford and Main roads was of nuisance proportions for residents but a boon to many businesses. Remember Butler's donuts?
- Development interests eyed increased tourist business opportunities to develop from increased tourism.

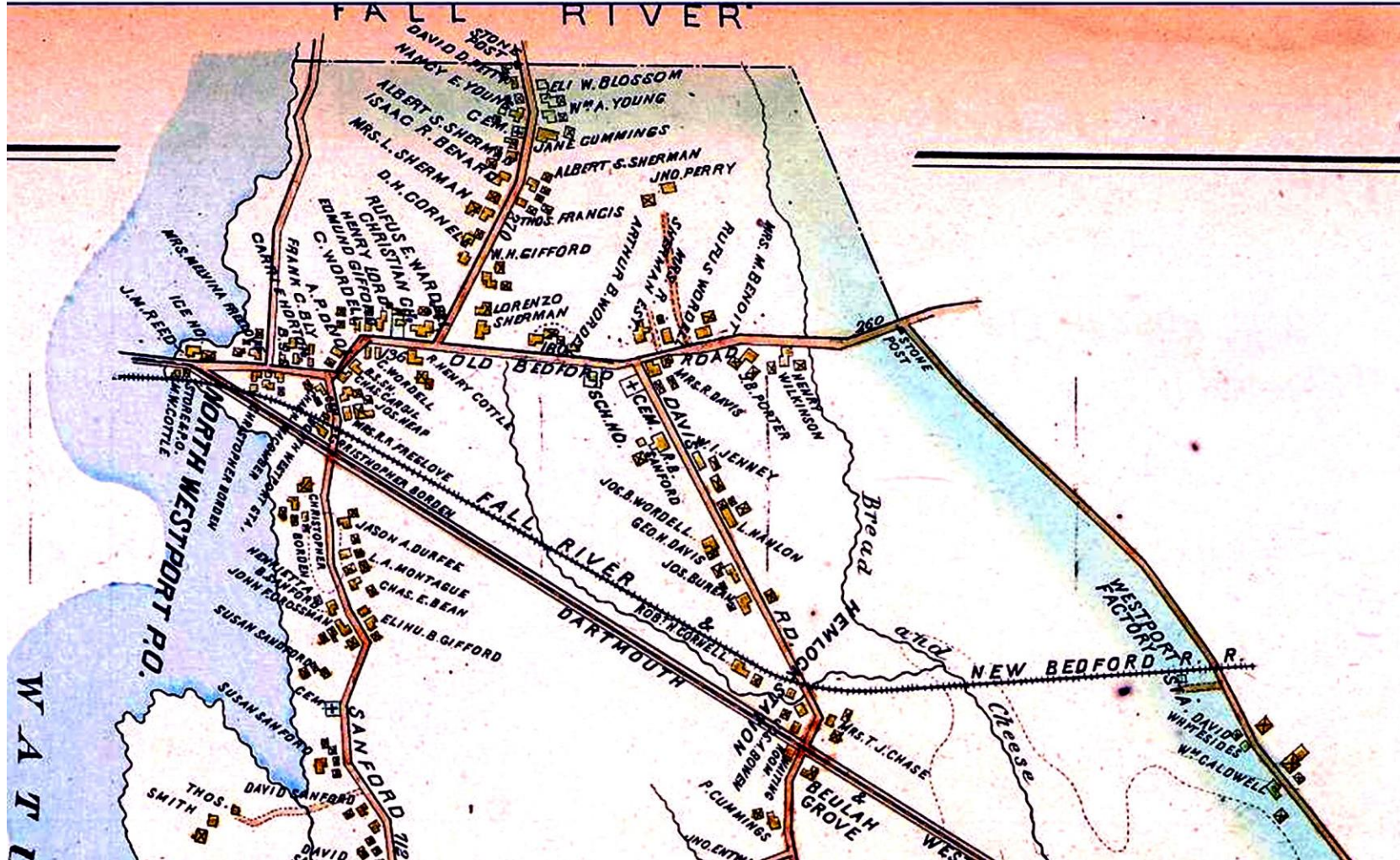
Our then long term State Rep., John Long was in favor and influenced the State Legislature to fund the takeover expenses.

Town and other citizens were enlisted with the promise of "Cheap and easy beach access".

Rt. 88 caused drastic Changes to Farming,

- State takes W. Horseneck and Gooseberry in 1956
- New Town middle Road was 12 miles long, with a new Bridge built in 1958, 88's right of way width is unbelievably 350 feet. About 550 Acres of area.
- This new Road caused Little change to the fishing industry. But the farming community and associated activities were drastically changed.
- 88 knifed thru Farms and other open lands. 47 were destroyed by end of construction in 1960. 8 of them on N. end's Beulah rd. (now Gifford)
Non-farmable Lands were sold to developers, two developers were on the novice Planning Board with scanty Sub-Division Regulations.
This initiated a massive Development spurt that lasted to the 1990's. In effect changing Westport from a Farming to Residential community.

A LOOK AT 1895 WESTPORT



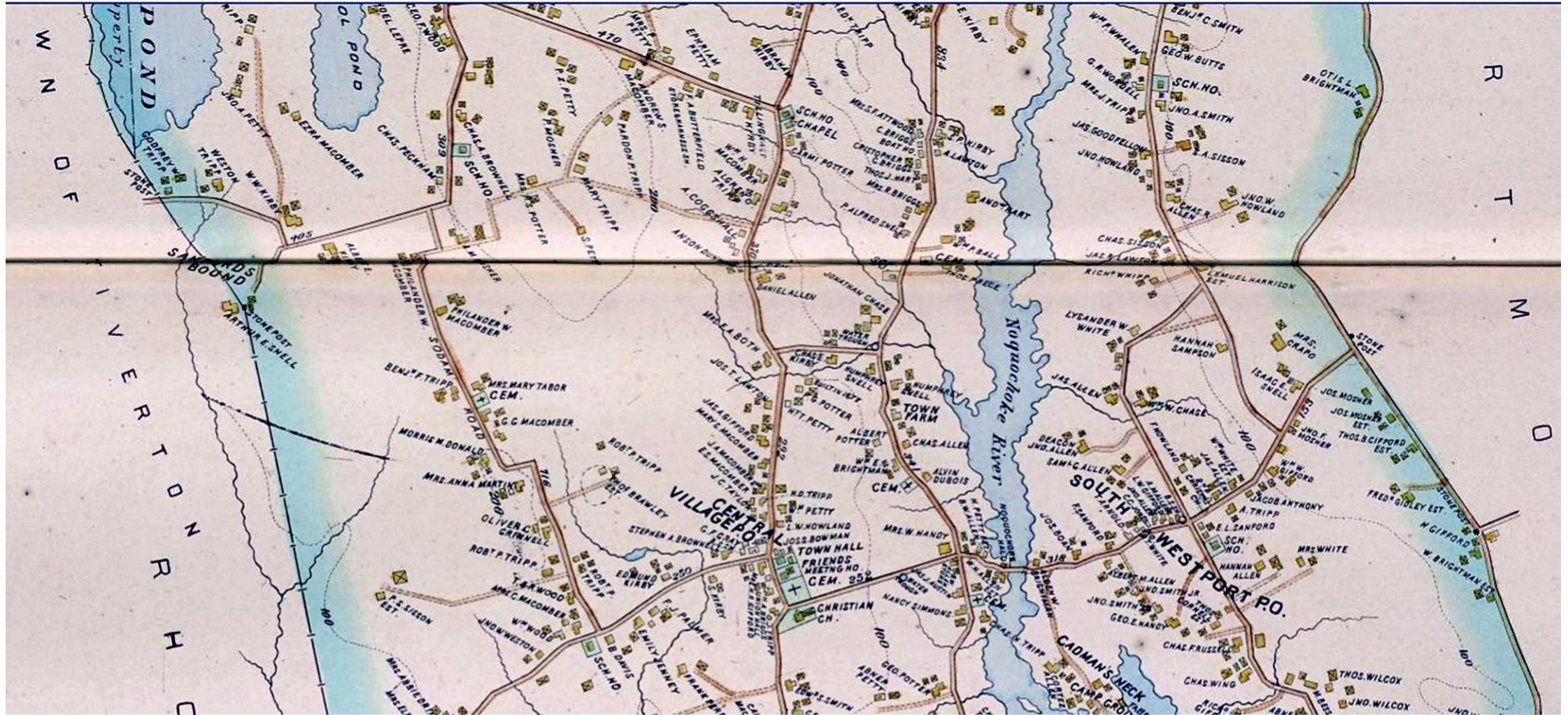
A LOOK AT 1895 WESTPORT



A LOOK AT 1895 WESTPORT



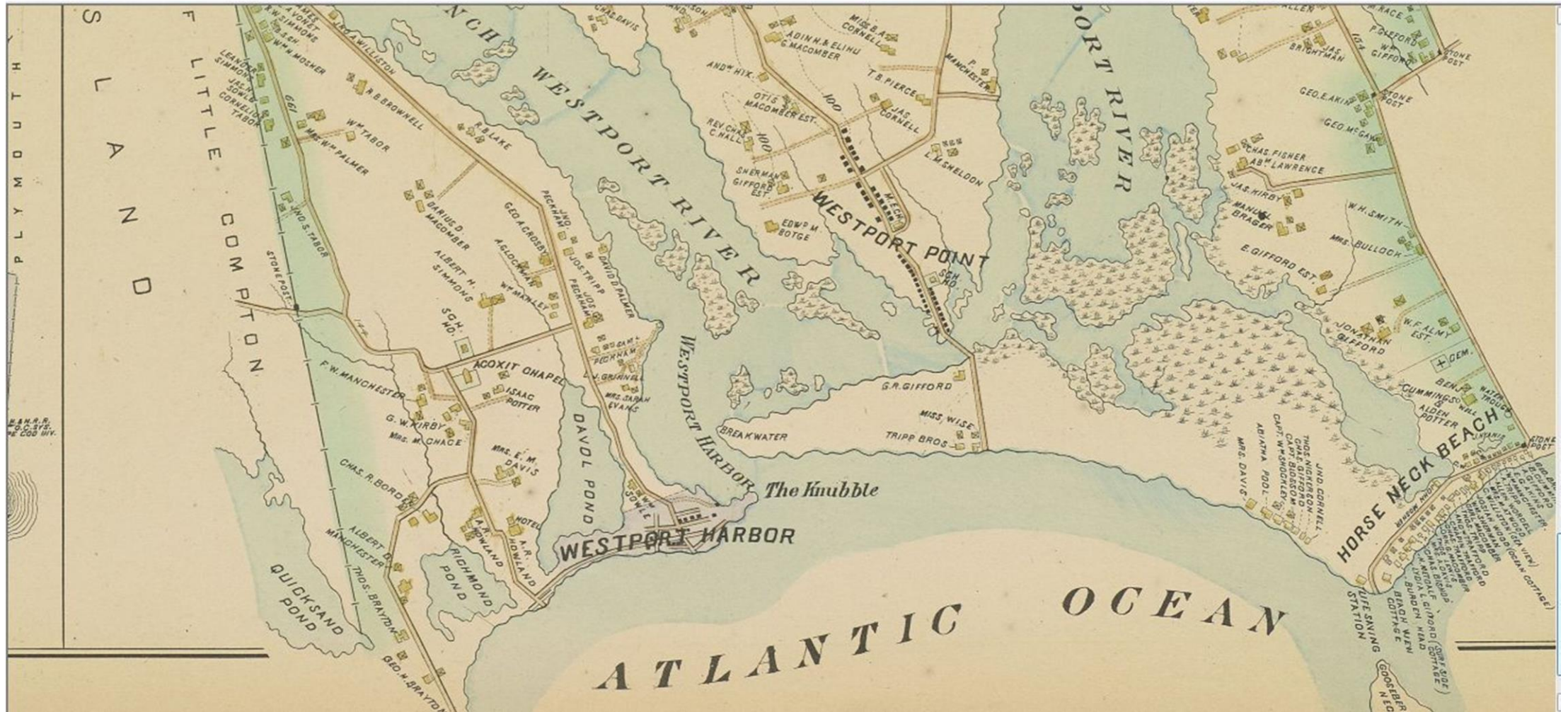
A LOOK AT 1895 WESTPORT



A LOOK AT 1895 WESTPORT



A LOOK AT 1895 WESTPORT



Destruction of East River headwaters Ponds. By State edict simultaneous with Rt. 88 construction.

- Town Central drainage patterns were changed from meandering to quick run off channeling.
- Stormwater volumes and velocities changes affected long term Rivers health, fisheries. Marine Fisheries 1968 report documents the Rivers conditions of the time.
- Accelerated floods overtopped our Mouse Mill and other Dams and flooded downstream lands.
- Trout and Mill ponds (about 40 acres) uncontrolled sediment impounded for thousands of years was loosed to siltate the East River with damaging effects to its previous fisheries and slowly convert it to marsh and swamp . A continuing unabated sediment flow.

Changes caused by 88. Govt. Affairs and Town life.

Eviction of Gooseberry Island. Thousands relocated. Moved to other Locations, like Petty heights summer colonies now permanent homes. Long term contributors to River pollution.

Development spurt and population increase from 60's to 80's. Ex., 1975, 300 new families, student population of 2600

Rules, Regulations, By-laws changes continuous from 1970 to '75, intense set of new directions to 80's. See 1972 Master Plan for activities that set new directions.

Rt.88 triggered changes of W. from a Pastoral to residential community.

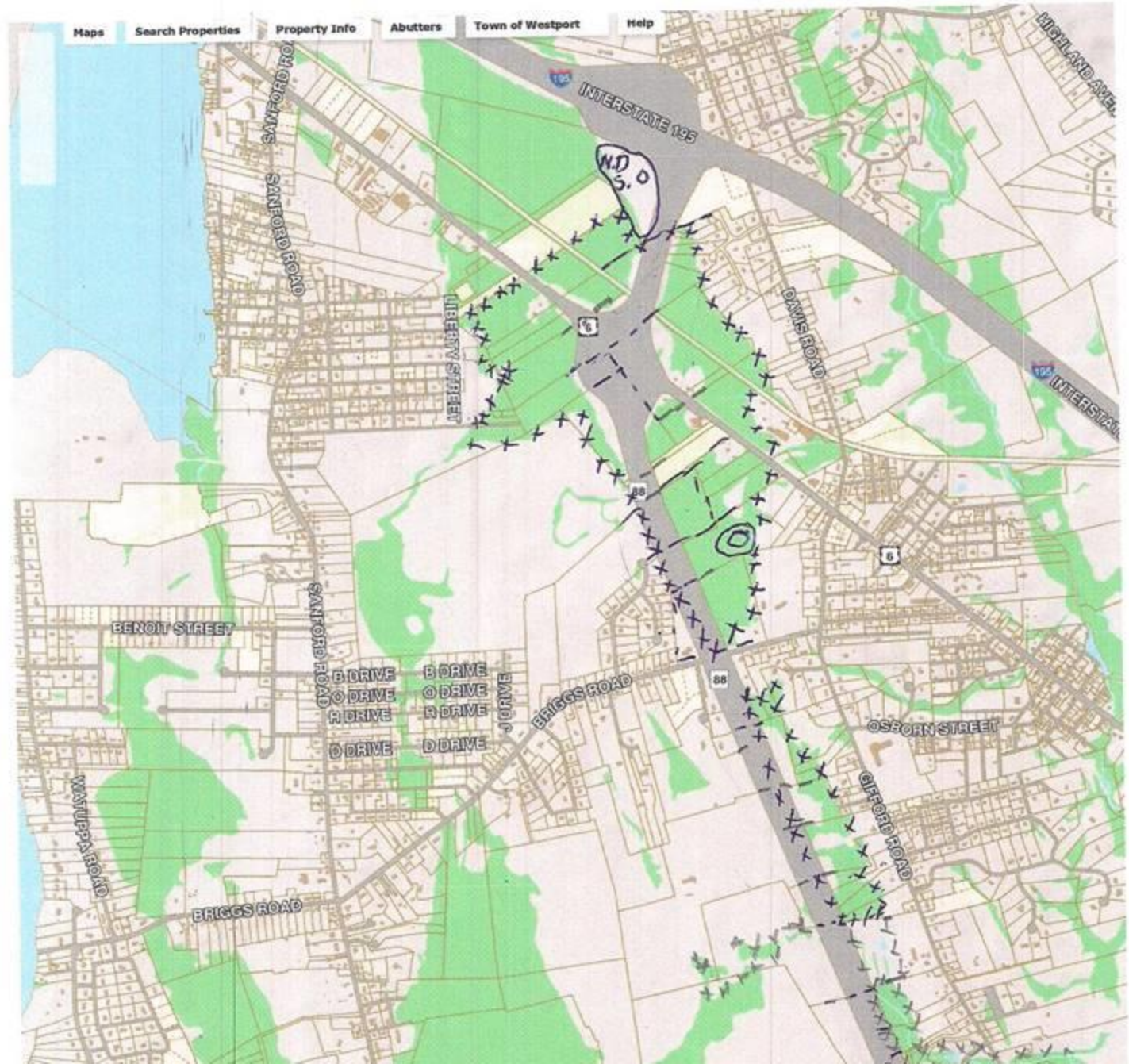
Rt 88 and: Rts. 195, 177, 6, and about 170 miles of Town road watersheds, with 1000's of mostly uncontrolled outfalls create damaging drainage conditions that affect all aspects of our infrastructure.

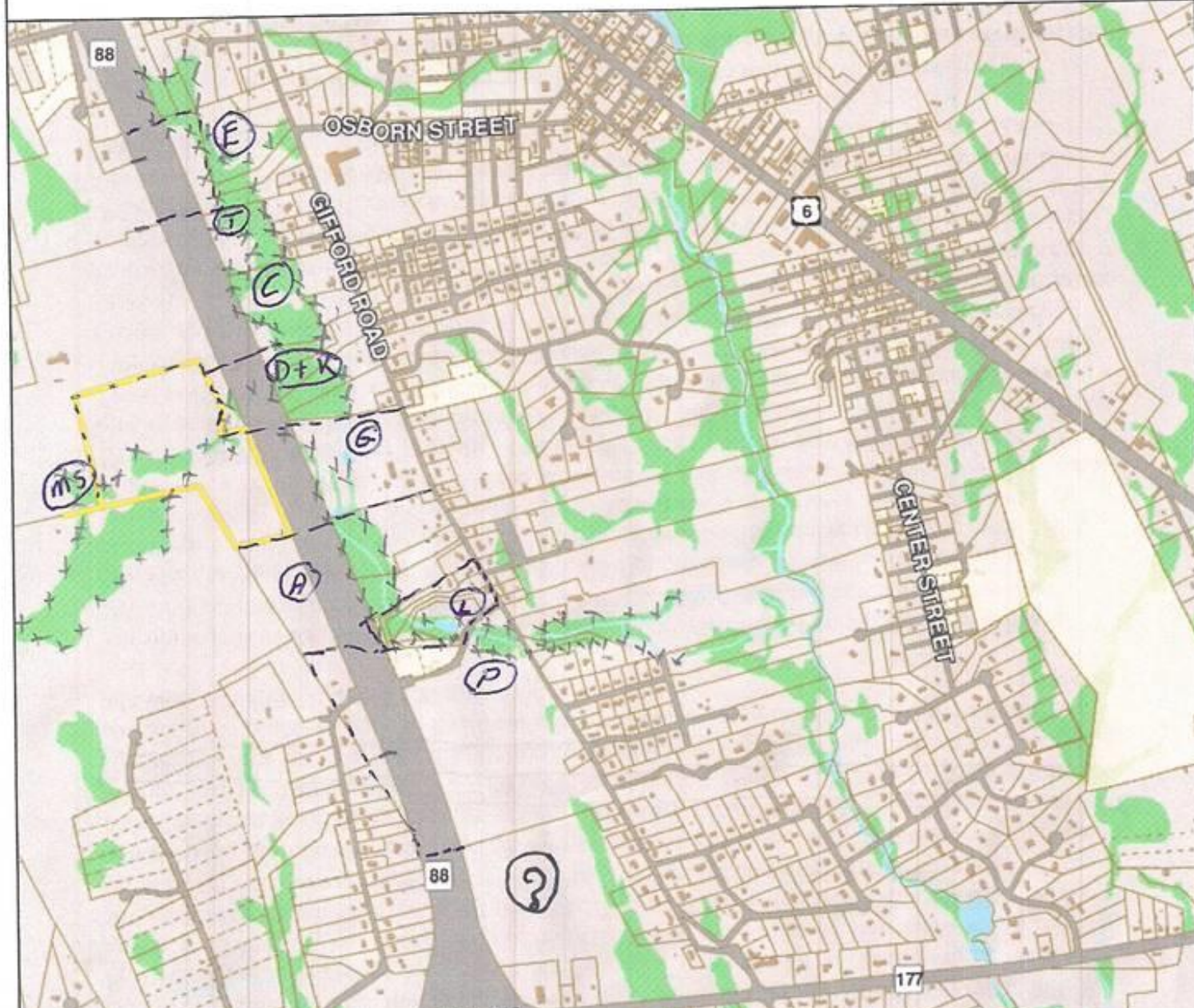
Maps done with use of Town GIS map

- Following 10 Maps will:
- Highlight the N. End Beulah rd. farms before Rt 88.
- Goldstein's Farm owners succeeded in having the only culvert installed under 88 to allow their cows to transit to their back lands. The Menard Still was at the upper edge of that land.
- Goldstein's Farm owners also succeeded in the Sullivan Drive right of way to allow machinery access to their back lands.
- The Maps trace the length of 88 from Rt 6 to Bridge st. at Horseneck
- Point out the farms and lands that were changed; separated, could not be used, landlocked, inaccessible,
- Point out Changes in water distribution

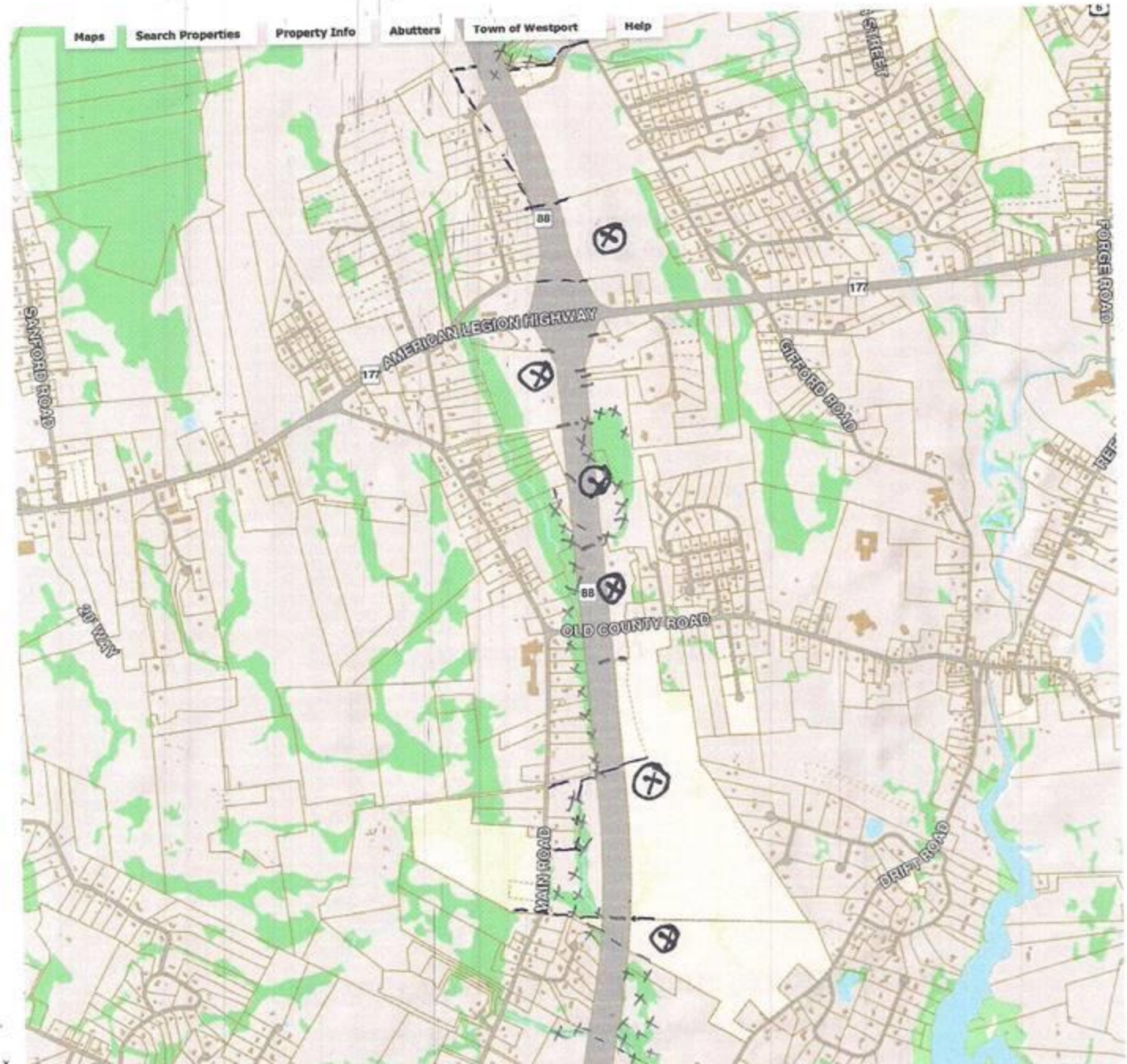
W SHD 3 FORMER FARMS

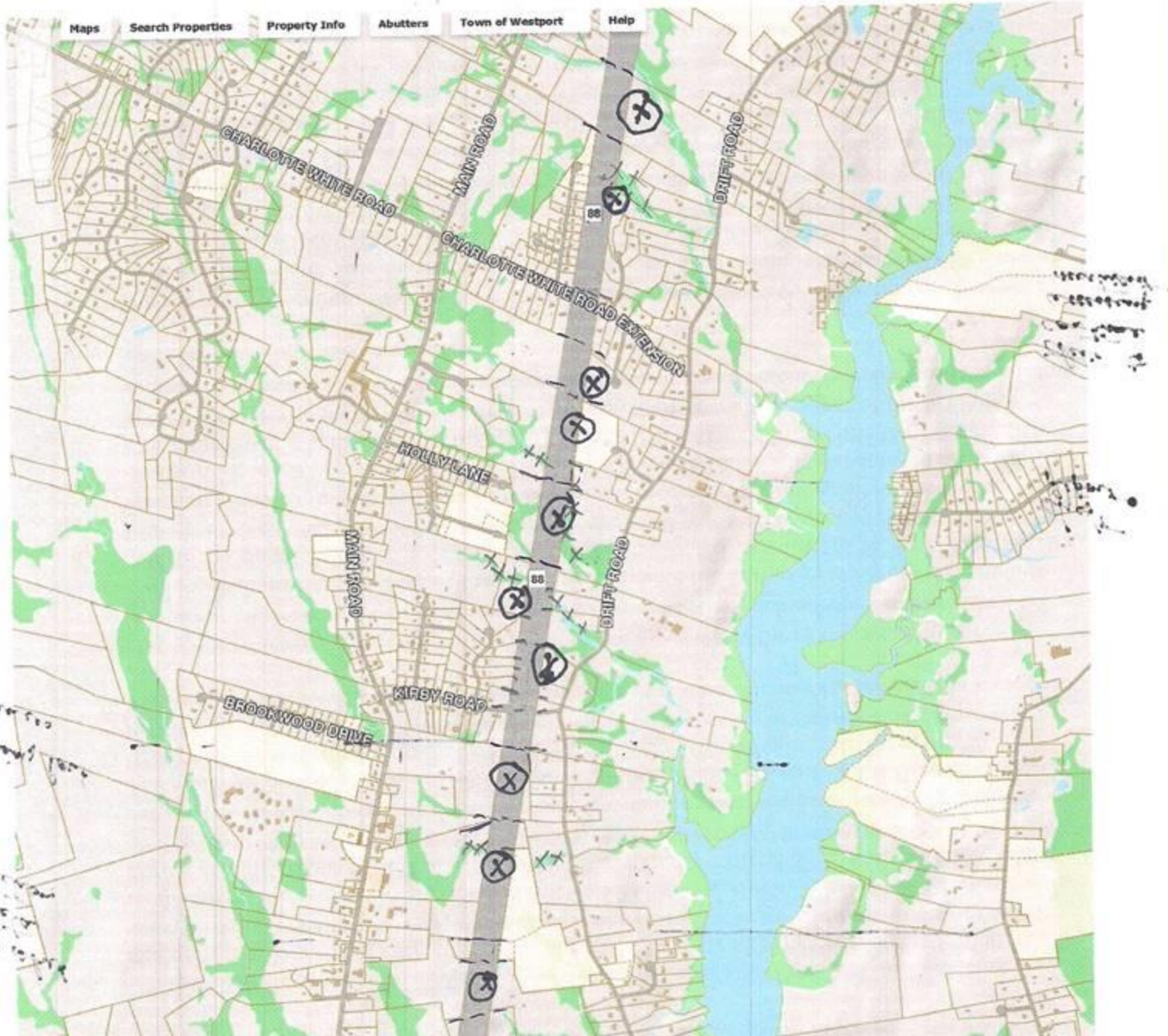


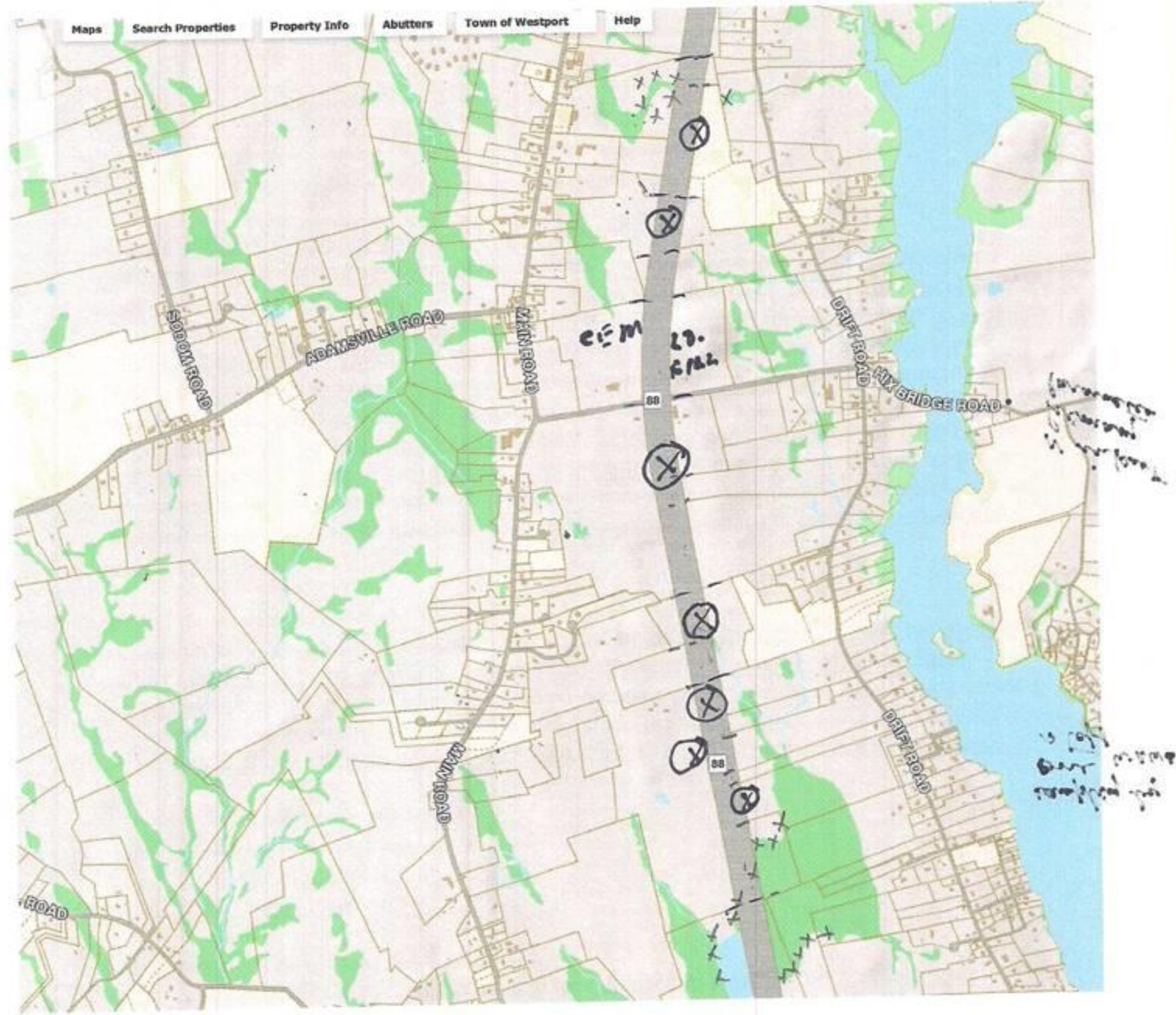


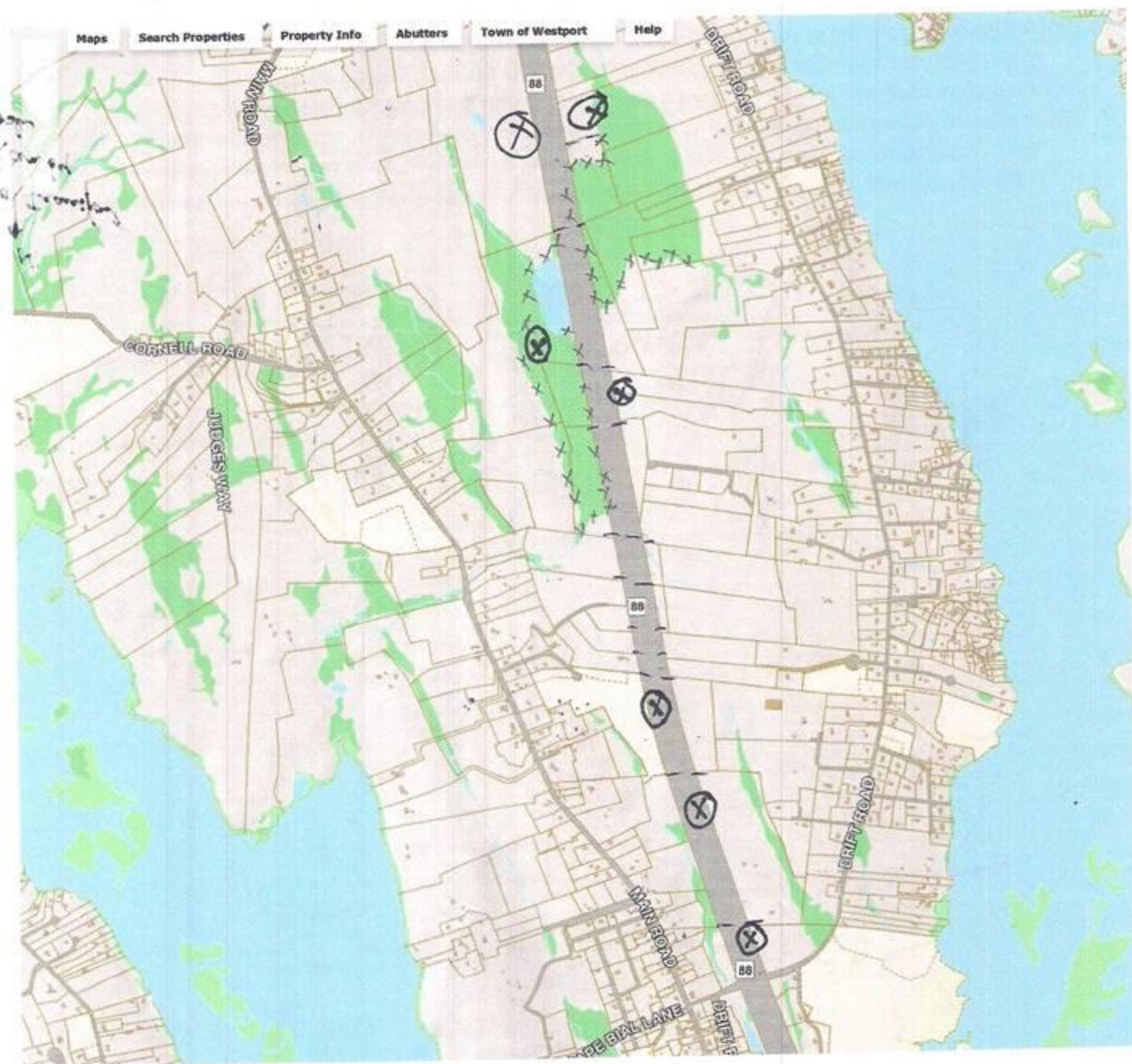


Maps Search Properties Property Info Abutters Town of Westport Help

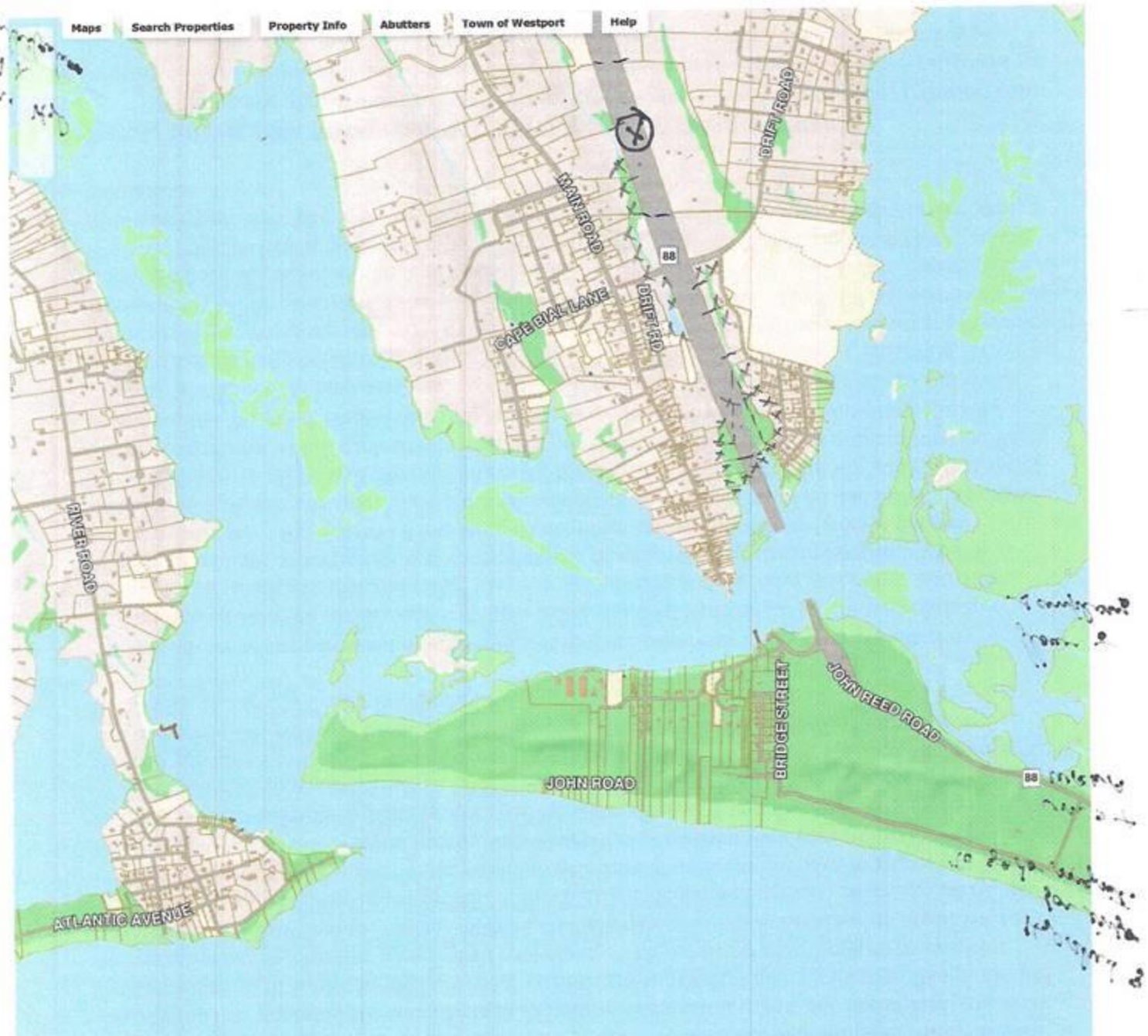








*1000
W W
2.1.1.1*



1000 W W 2.1.1.1





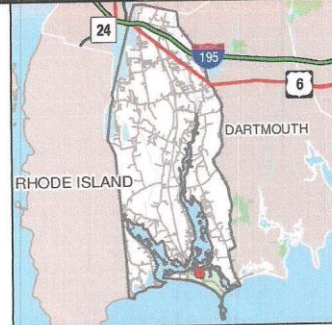
NO PUBLIC ACCESS TO
THAT PORTION OF
BRIDGE ST.



**MAP FOR REFERENCE ONLY
NOT A LEGAL DOCUMENT**

The Town makes no claims and no warranties, expressed or implied, concerning the validity or accuracy of the GIS data presented on this map.

Parcels updated December 31, 2014



88 Effects involved Much more detail than presented here.

- End
- THANK YOU
- By Claude A. Ledoux
- 83 year old French Canuck immigrant (1949)
Age 13.