

REMEMBERING PERRY'S GROVE

- OVERVIEW OF THIS EVENING'S PROGRAM
- - **WHERE** WAS "PERRY'S GROVE & CLAMBAKE PAVILION" ?
 - **WHEN** WAS IT IN OPERATION?
 - **WHO** STARTED THE BUSINESS?
 - **WHAT** OTHER FAMILIES RAN IT?
 - **WHO ATTENDED** FUNCTIONS THERE?
 - **MEMORIES & STORIES** FOR SHARING
 - VIDEO OF OPERATIONS AT PERRY'S GROVE
 - INTERVIEW WITH MARIE (GUILLEN) BATES

REMEMBERING PERRY'S GROVE

-
-
- ***WHERE*** WAS “PERRY’S GROVE & CLAMBAKE PAVILION” ?

REMEMBERING PERRY'S GROVE

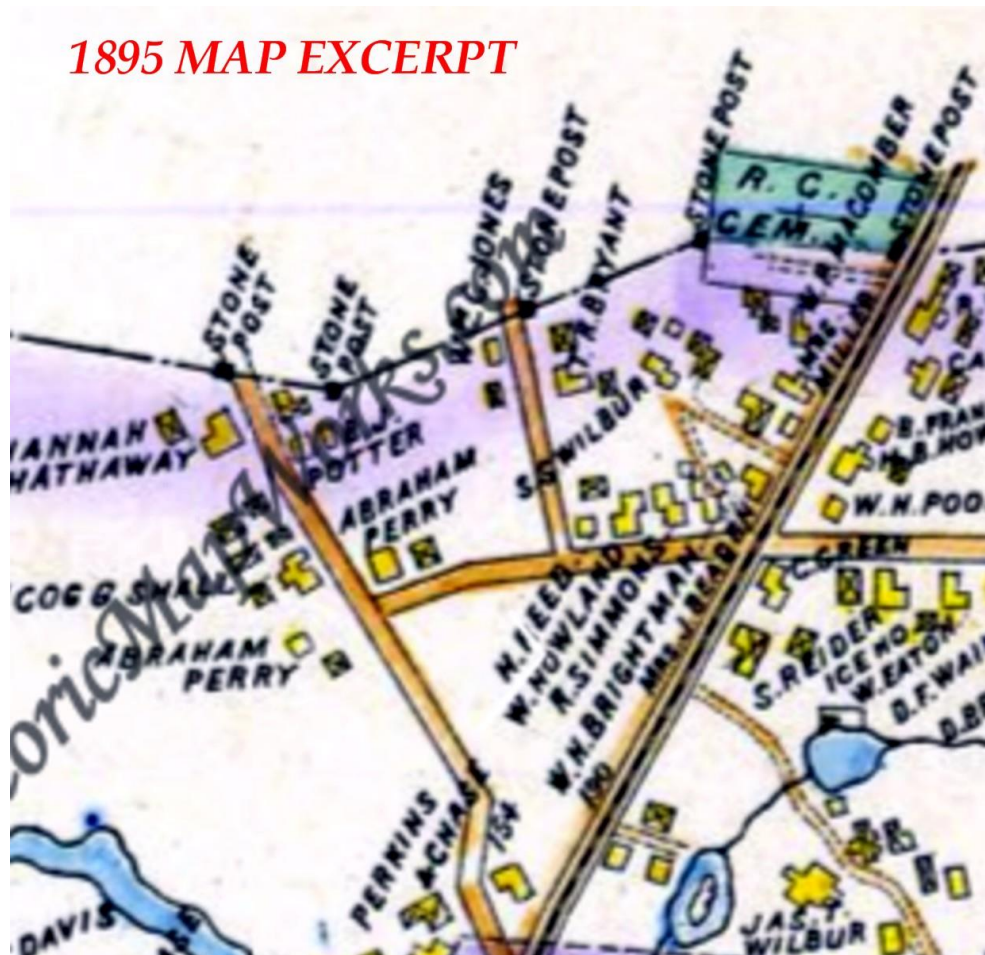
- ***WHERE*** WAS “PERRY’S GROVE & CLAMBAKE PAVILION” ?



**1871 BEERS MAP EXCERPT-LOCALE BEFORE
THE CLAM PAVILION**

REMEMBERING PERRY'S GROVE

- WHERE WAS IT?



REMEMBERING PERRY'S GROVE

-
- -
 - WHEN WAS IT STARTED
 -
 -
 -

REMEMBERING PERRY'S GROVE

WHEN WAS IT IN OPERATION ?

**1884-
1959**

After 75 Years...

YOUR LAST CHANCE

TO ENJOY
A FAMOUS

● **PERRY'S GROVE
CLAMBAKE**

HATHAWAY ROAD
NORTH DARTMOUTH

— Sponsored by the MASSASOIT CLUB, INC. —

SUNDAY, AUGUST 30, 1959

1:30 P. M.

Fun for All Ages --- Door Prizes --- Sports

TICKETS \$2.50 (incl. tax)

REMEMBERING PERRY'S GROVE

-

-

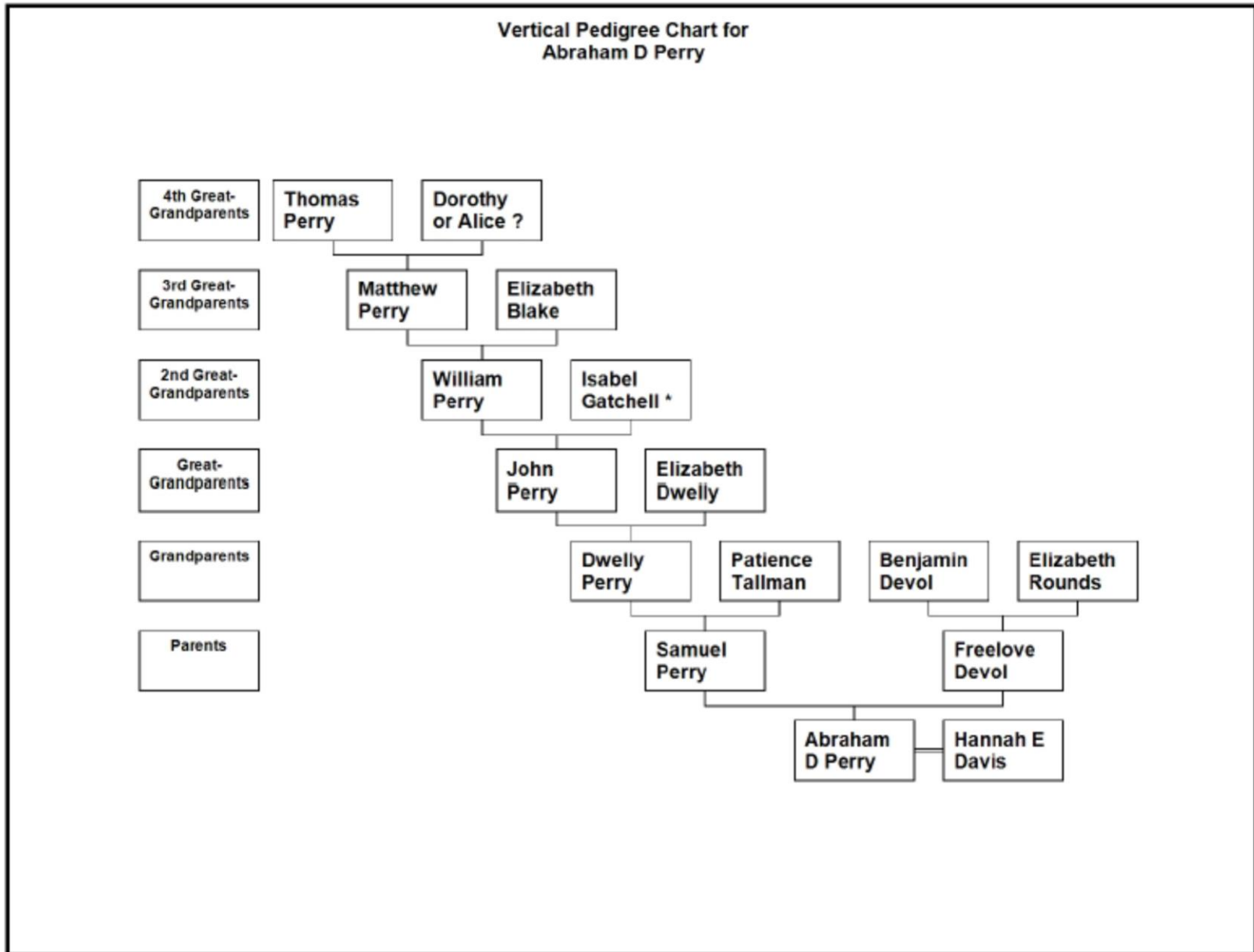
-

- ***WHO*** STARTED THE BUSINESS?

-

-

REMEMBERING PERRY'S GROVE



REMEMBERING PERRY'S GROVE

Individual Report for Abraham D Perry

Individual Summary: Abraham D Perry
1835 - Bet. 1910–1919



Sex: Male
Father: Samuel Perry
Mother: Freelove Devol

Individual Facts:

Birth: 1835 in New Bedford, Bristol, MA
Residence: 1850 in Dartmouth, Bristol, MA
Residence: 1860 in Dartmouth, Bristol, MA
Residence: 1880 in Dartmouth, Bristol, MA
Residence: 1900 in Dartmouth Town (north part), Bristol, MA
Residence: 1910 in Dartmouth, Bristol, MA; Age in 1910: 75; Marital Status: Married;
Relation to Head of House: Head
Death: Bet. 1910–1919
Name: Abram Perry

Shared Facts:

Hannah E Davis

Marriage: 17 Oct 1872 in New Bedford, Bristol, MA
Children: [no children with Hannah E Davis]

REMEMBERING PERRY'S GROVE

Notes:

Person Notes:

In the 1850 US Census of Dartmouth Abraham D. Perry, 15, laborer, enumerated with Mother Freelove and sister Ophelia, aged 10. Mother's real estate is valued at \$600.

In the 1855 MA Census of Dartmouth Abraham D. Perry, 20 single, mariner, enumerated with mother Freelove, 55 and sister Ophelia aged 15, in the house on Slocum Road, corner of Hathaway Rd.

In 1859, Abraham D. Perry of Dartmouth, aged 23, shipped aboard the ship >Amethyst< from New Bedford, MA. Described with dark hair and light skin color.

In the 1860 US Census of Dartmouth, still single, Abraham D. Perry, 25, seaman, enumerated with mother Freelove, aged 60 and two children: Charles A. Welsh, 6 and William A. Welsh 4.

Abraham D. Perry, Mariner, N. Dartmouth, MA, aged 35, married on October 17, 1872 in New Bedford, MA, Hannah E. Davis 20, of Westport, MA. He was the son of Samuel & Freelove (Devol) Perry and she was the daughter of Peter & Hannah (Rounds) Davis. This was the first marriage for both partners and was conducted by E. McChesney, Clergyman.

In 1900 US Census of Dartmouth: Abram D. Perry, 65, farmer, head of house, married 27 years, wife, Hannah E. Perry, 47, and servant Walter Wilson 17, son of Nova Scotian parents.

In 1910 US Census Dartmouth: Abraham D. Perry, 75, farmer, head of household and Hana E. Perry, 58 were enumerated in their house on Slocum Road. Married 38 years. Reported having no children living or deceased.

The 1919 City Directory for New Bedford shows Hannah E. Perry, widow of Abram D. Perry, a widow, living in a house on 228 Smith Street. (Indicates that Abraham died in 1919 or before that.

Individual Summary: **Abraham D Perry**
1835 - Bet. 1910–1919



Sex: Male
Father: Samuel Perry
Mother: Freeloze Devol

Notes: *Continued*

1929 Directory of Dartmouth, MA- Hannah Perry, widow of Abraham D. Perry enumerated as boarding at the home of Carrie E. Davis on Slocum Road, North Dartmouth.

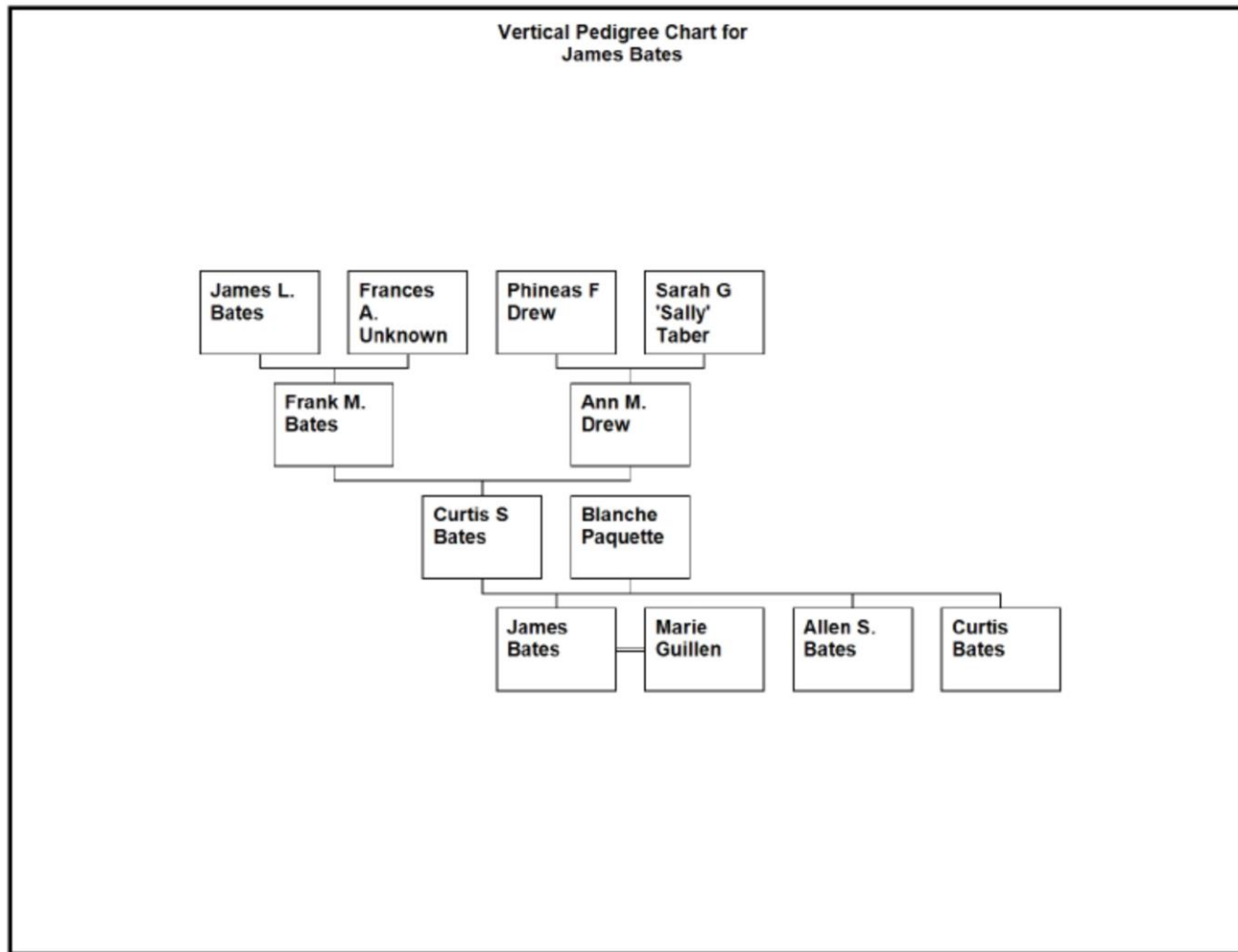
1932 Director of Dartmouth: Hannah Perry, widow of "Abram" had a house on 636 Slocum Road, N Dartmouth.

1935 Private written agreement: Clarence E. Davis & Cora L. Davis conveyed to Antonio R. & Maria L. Silva, a seven room house and five acres of land being the premises numbered 80 Hathaway Road in N Dartmouth, MA, being the same premises conveyed to the sellers by Hannah Perry about fourteen years ago (1921) together with 400 hens, 3 incubator brooders, one horse, harness, two wagons, and all farm tools on said premises. Price paid was \$3,550 of which \$50 was the down payment with balance due when the deed was delivered. The buyers agreed to pay the real estate taxes for that year.

REMEMBERING PERRY'S GROVE

-
- **THE MCAVOY FAMILY PURCHASED**
- **FROM THE PERRY'S**
- & SOLD TO THE BATES FAMILY**

REMEMBERING PERRY'S GROVE



THE BATES FAMILY OPERATED PERRY'S GROVE ca 1945-1959

REMEMBERING PERRY'S GROVE



BLANCHE & CURTIS BATES.

REMEMBERING PERRY'S GROVE



**ALLEN BATES ALSO WORKED AT THE PASKAMANSETT
LINKS GOLF COURSE IN SMITH MILLS**

REMEMBERING PERRY'S GROVE



REMEMBERING PERRY'S GROVE



REMEMBERING PERRY'S GROVE



REMEMBERING PERRY'S GROVE

-
-
- ***WHO ATTENDED*** FUNCTIONS THERE?
 - COMPANY OUTING GROUPS
 - CHURCH GROUPS
 - CLUB GROUPS
 - UNION GROUPS
 - FAMILY GATHERINGS
 - WEDDING RECEPTIONS
 - ETC ETC

–

REMEMBERING PERRY'S GROVE

Boston Herald article

Date: Sunday, August 13, 1905 **Paper:** Boston Herald (Boston, Massachusetts) **Page:** 13

This entire product and/or portions thereof are copyrighted by NewsBank and/or the American Antiquarian Society, 2004. Source: GenealogyBank.com

CLAMBAKE AT END OF AUTO JOURNEY

Members of the Bay State Automobile Association Also Enjoy the Tour from Boston Down the Pike to North Dartmouth.

REMEMBERING PERRY'S GROVE

[Special Dispatch to the Sunday Herald.]

NEW BEDFORD, Aug. 12, 1905. Members of the Bay State Automobile Association made the tour from Boston to North Dartmouth today, where a clam-bake had been prepared for them at Perry's grove. Sixteen machines were due to leave Boston this morning, but up to 1:45 o'clock, when the bake was opened, only 10 machines had arrived. The others arrived at intervals during the afternoon and reported no mishaps on the road, though several had run from one to fifteen miles out of the way through taking the wrong roads.

REMEMBERING PERRY'S GROVE

BOSTON TO DARTMOUTH ROUTE

route followed by most of the machines
was from the Hotel Lenox to Forest
Hills, to Mattapan, to Brockton, to
Taunton, to County street, to Hathaway
road, to the grove.

REMEMBERING PERRY'S GROVE

- **MAKING THE TRIP:**

- 1ST 1HR 50 MIN-35 HP **LOCOMOBILE** (1)
- 2ND 2HRS 15 MIN- 35HP **COLOMBIA**
- **MORS-“A FRENCH MACHINE”** -11HP
- **PEERLESS**-24HP
- **POPE-TOLEDO** – 50HP
- **WINTON** (1) -25HP
- **LOCOMOBILE** (2) -25HP
- **PACKARD** -22HP
- **RAMBLER** -18HP
- **WINTON**(2) -24HP

REMEMBERING PERRY'S GROVE



1905 LOCOMOBILE

REMEMBERING PERRY'S GROVE

-
-
-



1901 MORS TONNEAU, 10 HP

REMEMBERING PERRY'S GROVE



1905 PEERLESS

REMEMBERING PERRY'S GROVE



1904 POPE-TOLEDO

REMEMBERING PERRY'S GROVE

-
-
-



1899 WINTON

REMEMBERING PERRY'S GROVE

*1905 Packard Model N
Runabout*



REMEMBERING PERRY'S GROVE

-
-
-



Rambler 7HP Rear-entrance tonneau 1904

REMEMBERING PERRY'S GROVE

DISPENSE WITH A HORSE



and save the expense, care and anxiety of keeping it. To run a motor carriage costs about $\frac{1}{2}$ cent a mile.

THE WINTON MOTOR CARRIAGE

is the best vehicle of its kind that is made. It is handsomely, strongly and yet lightly constructed and elegantly finished. Easily managed. Speed from 3 to 20 miles an hour. The hydrocar-

Price \$1,000. No Agents.
bon motor is simple and powerful. No odor, no vibration. Suspension Wire Wheels. Pneumatic Tires. Ball Bearings.  *Send for Catalogue.*

THE WINTON MOTOR CARRIAGE CO., Cleveland, Ohio.

REMEMBERING PERRY'S GROVE

-
-
-
- ***MEMORIES & STORIES*** FOR SHARING

REMEMBERING PERRY'S GROVE

Perry, Abram D., clam baker, Hathaway rd., cor. Slocum, (N. D.) h. do.

1909 DARTMOUTH DIRECTORY ENTRY

REMEMBERING PERRY'S GROVE

1955—MANNING'S DARTMOUTH DIRECTORY—1955

Bates Curtis S (Blanche D) slsm and pres
Massasoitt Club Inc and Robin Hood Res-
taurant Inc and chm Cemetery Commission-
ers h66 Hathaway rd ND

” James A (Marie C) clk NB and treas Massa-
soitt Club Inc and Robin Hood Restaurant
Inc h70 Hathaway rd ND

REMEMBERING PERRY'S GROVE

After 75 Years...

YOUR LAST CHANCE

TO ENJOY
A FAMOUS

● PERRY'S GROVE
CLAMBAKE

HATHAWAY ROAD
NORTH DARTMOUTH

— Sponsored by the MASSASOIT CLUB, INC. —

SUNDAY, AUGUST 30, 1959

1:30 P. M.

Fun for All Ages --- Door Prizes --- Sports

TICKETS \$2.50 (incl. tax)

REMEMBERING PERRY'S GROVE

ROBIN HOOD RESTAURANT INC

PERRY'S GROVE PAVILION

CLAMBAKES & CHICKEN BARBECUES

CATERING TO PRIVATE PARTIES

76 Hathaway Rd N Dart. WY 4-7305

REMEMBERING PERRY'S GROVE

- **MEMORIES & STORIES**
 - **PUTTING OUT THE TRASH FIRE**
 - **TEETH DOWN THE TOILET**
 - **ASLEEP IN THE GARDEN**
 - **MAY I USE YOUR BATHROOM?**

REMEMBERING PERRY'S GROVE

TESTIMONY FROM ONE WHO WAS THERE

MARIE (GUILLEN) BATES

WIDOW OF JAMES BATES

A VIDEO BY DCTV'S DEREK FRATES