

THE HELFAND FAMILY OF DARTMOUTH

- **A ROUND TABLE DISCUSSION**
- **MODERATOR: BOB HARDING**
- **MEMBERS AT THE TABLE:**
 - EDITH HELFAND
 - SOPHIE HELFAND
 - AURORA (LAFOND) CHACE
 - DORIS (DAVIES) DAVENPORT
 - RUBEN GOLDSTEIN

HELFAND FAMILY OF DARTMOUTH

OVERVIEW

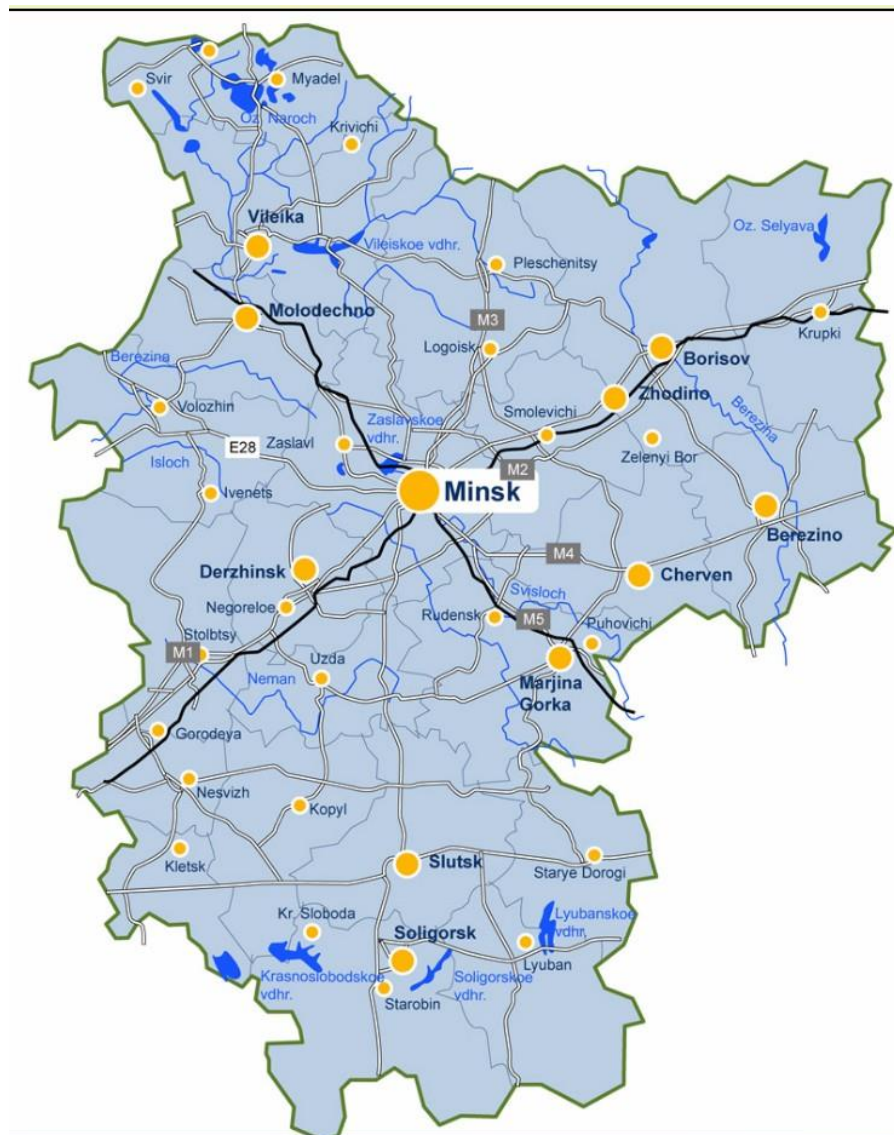
- SLIDE PRESENTATION WITH COMMENTS AND/OR QUESTIONS AT ANY TIME
- AT END OF SLIDES:
 - GENERAL QUESTIONS IN REGARDS
 - THE FARM & FAMILY
 - FAMILY & FARM STORIES
 - PRIMARY & GRAMMAR SCHOOL
 - DARTMOUTH HIGH SCHOOL

THE HELFAND FAMILY OF DARTMOUTH

OVERVIEW

INTRODUCTION:
RUSSIAN BACKGROUND

HELFAND FAMILY OF DARTMOUTH



HELFAND FAMILY OF DARTMOUTH

- **THE PALE OF SETTLEMENT**
- . . . WAS A WESTERN REGION OF IMPERIAL RUSSIA IN WHICH PERMANENT RESIDENCY BY JEWS WAS ALLOWED AND BEYOND WHICH PERMANENT RESIDENCY WAS GENERALLY PROHIBITED
- IT WAS ABOUT 20% OF IMPERIAL RUSSIA AND INCLUDED MUCH OF PRESENT-DAY LITHUANIA, **BELARUS**, POLAND, MOLDOVA, LATVIA, UKRAINE, & PARTS OF WESTERN RUSSIA

HELFAND FAMILY OF DARTMOUTH

- **CONDITIONS OF LIFE IN RUSSIA**
- The concentration of Jews in the Pale made them easy targets for pogroms and anti-Jewish riots by the majority population. These, along with the repressive May Laws, often devastated whole communities.
- Though pogroms were staged throughout the existence of the Pale, particularly devastating attacks occurred in 1881–83 and 1903–06, targeting hundreds of communities, assaulting thousands of Jews and causing considerable

HELFAND FAMILY OF DARTMOUTH

- GUSSIE (ROSOFSKY) HELFAND & ANNIE (ROSOFSKY) HELFAND, MOTHER OF 13 & MOTHER OF 7

“A small town of Minsk” (UZDA)

- HARRY HELFAND & WILLIAM HELFAND, THEIR HUSBANDS, WERE BORN IN SLUTZ, ANOTHER TOWN IN MINSK

HELFANDS OF DARTMOUTH

- EMIGRATION FROM RUSSIA – ANNIE & GUSSIE IN THE LATE 1890'S
- WILLIAM & HARRY IN 1902
- RELATIVES OF THEIR MOTHER (IDA BARESHEVSKY) WERE IN FALL RIVER

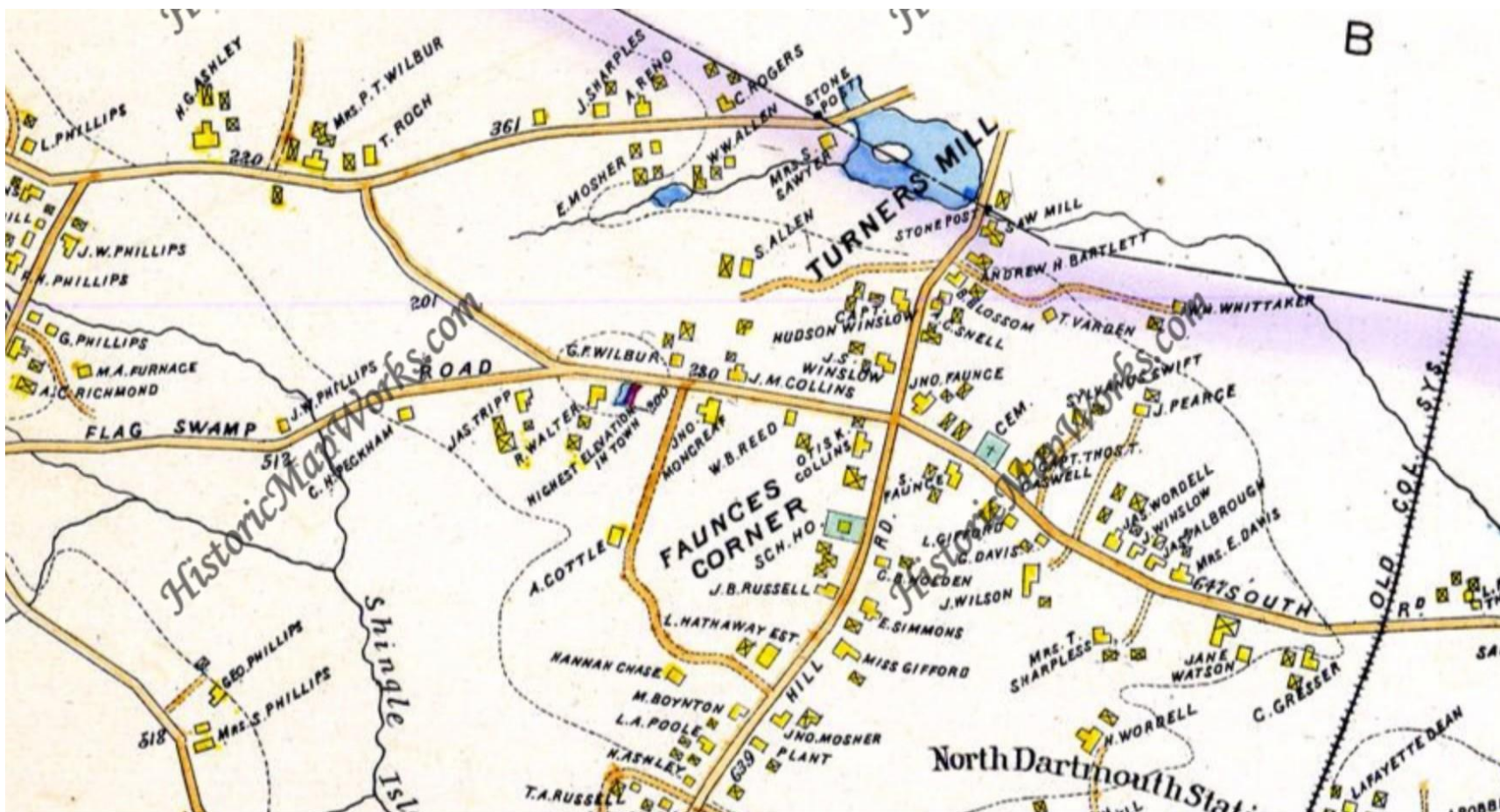
HELFANDS OF DARTMOUTH

- **WEDDING BELLS!**
- WILLIAM HELFAND m ANNIE ROSOFSKY-
ABT 1907
- HARRY HELFAND m GUSSIE ROSOFSKY-
4 JULY 1911

HELFANDS OF DARTMOUTH

- 1910 CENSUS LIVING IN HIGH HILL AREA
- SAMUEL & IDA, (Married, 30 yrs); WILLIAM & ANNIE (Married, 3 yrs)
- BROTHERS: HARRY, 24; HENRY, 16; & LOUIS, 12

HELFANDS OF DARTMOUTH

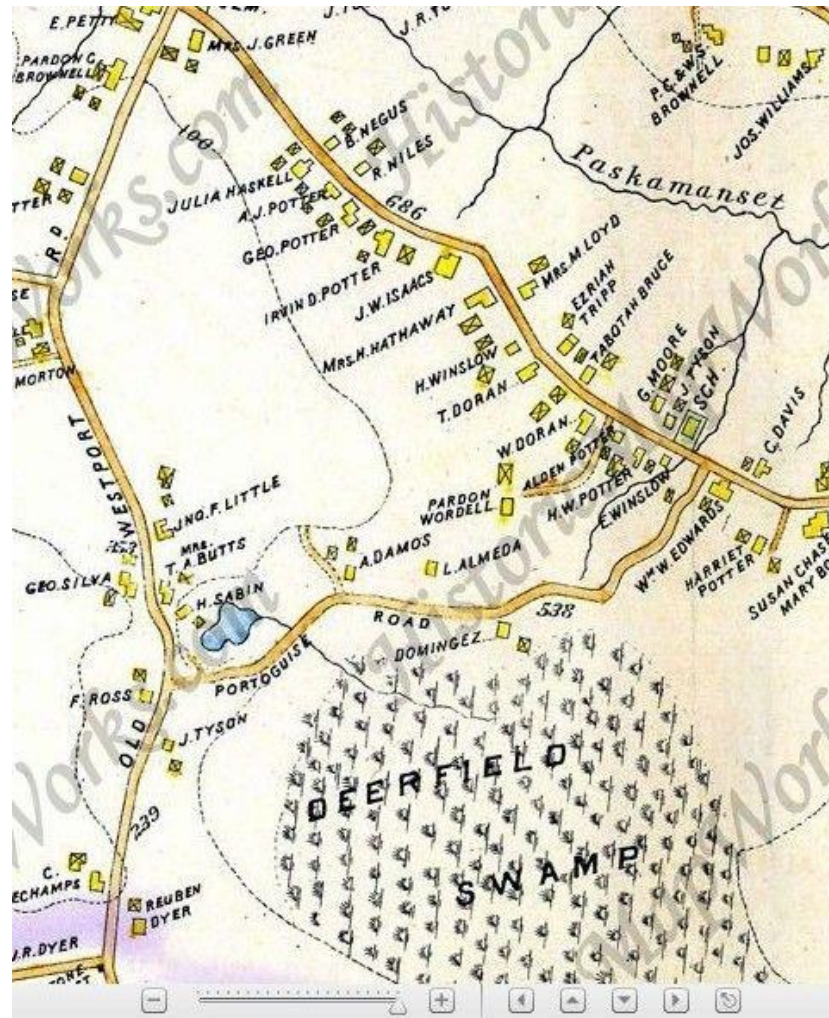


1895 EVERTS & EDWARDS MAP-HIGH HILL AREA OF DARTMOUTH

HELFANDS OF DARTMOUTH

- HIGH HILL FARM TOO SMALL
- 22 JUNE 1912 – FARM ON CHASE RD
BOUGHT BY SAMUEL, WILLIAM & HARRY
HELFAND FROM HOLDER W. POTTER

HELFANDS OF DARTMOUTH

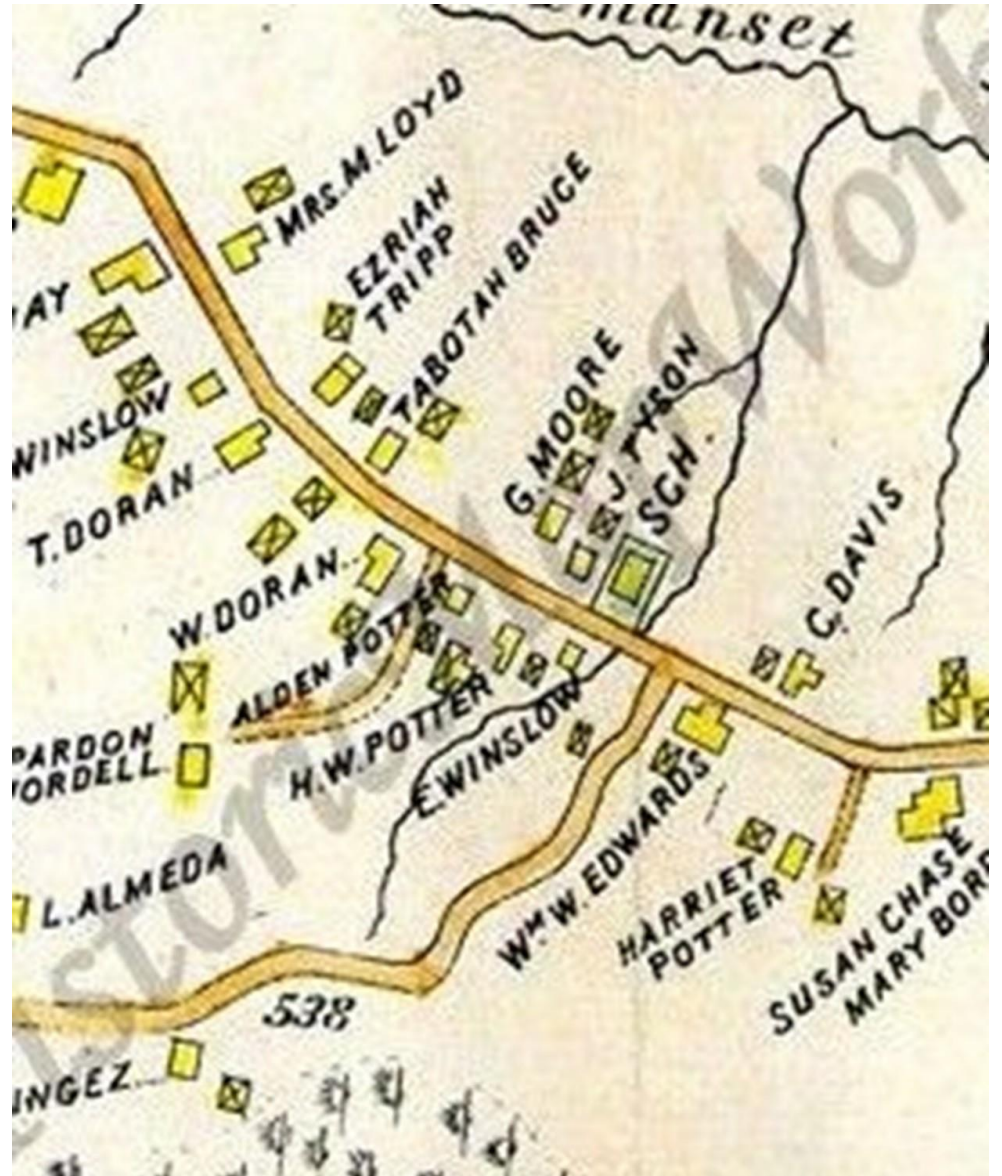


1895, EVERTS & RICHARDS DARTMOUTH

“H. W. POTTER” SOLD TO THE HELFANDS

HELFANDS OF DARTMOUTH

CLOSER VIEW OF "H. W. POTTER"
FARM IN 1895 SHOWING IMMEDIATE
NEIGHBORHOOD



HELFANDS OF DARTMOUTH

ZOOMED IN!!!



HELFANDS OF DARTMOUTH

CREDITS: Compiler, R E Harding

UMass Dartmouth Library Archives and
Special Collections

The Helfand Farm in 1964 when the land was appraised
for the SMTI campus.



1964 PHOTO HELFAND FARMHOUSE AND BARN

HELFANDS OF DARTMOUTH

**PHOTO CREDITS FOR FOLLOWING: FROM DNRT
REPORT**

JANUARY 2015

ERIC GRADOIA
ARCHITECTURAL HISTORY & CONSERVATION
SCHAGHTICOKE, NEW YORK 12154

HELFANDS OF DARTMOUTH

HELFAND FARM, DARTMOUTH, MASSACHUSETTS

ARCHITECTURAL SURVEY



Fig. 6. Helfand house, north (gable) and east elevations. December 2014.

HELFANDS OF DARTMOUTH



Fig. 7. Helfand house, north elevation showing ell and circa 1875 addition at west end. December 2014.

HELFANDS OF DARTMOUTH

HELFAND FARM, DARTMOUTH, MASSACHUSETTS

ARCHITECTURAL SURVEY



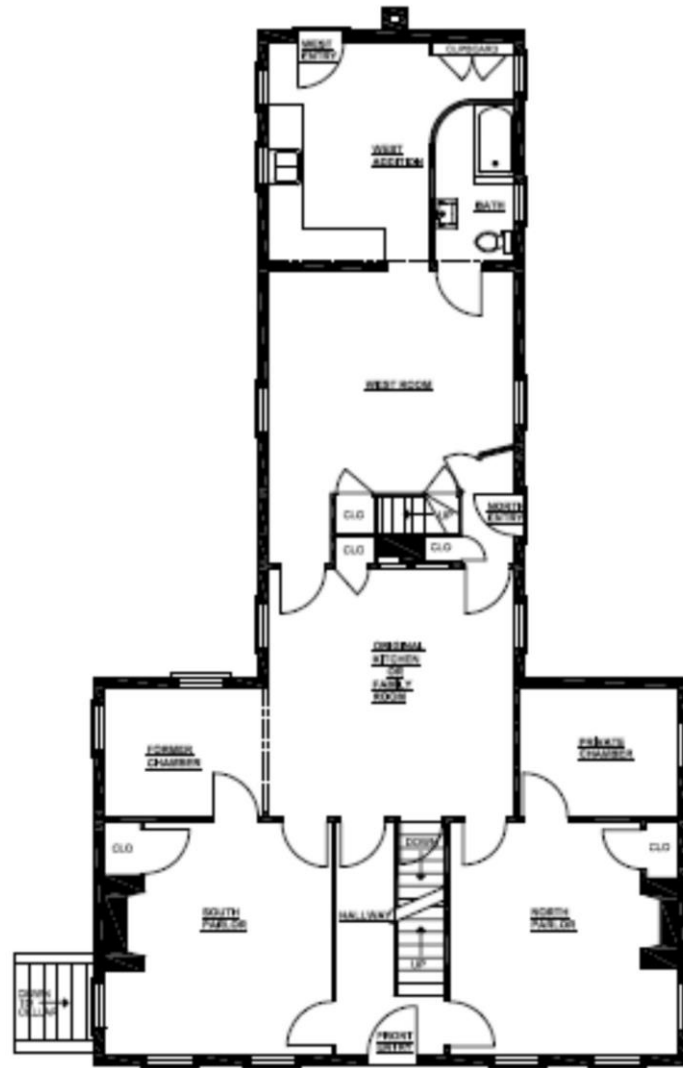
Fig. 8. Helfand house, view looking southeast. December 2014.

HELFANDS OF DARTMOUTH



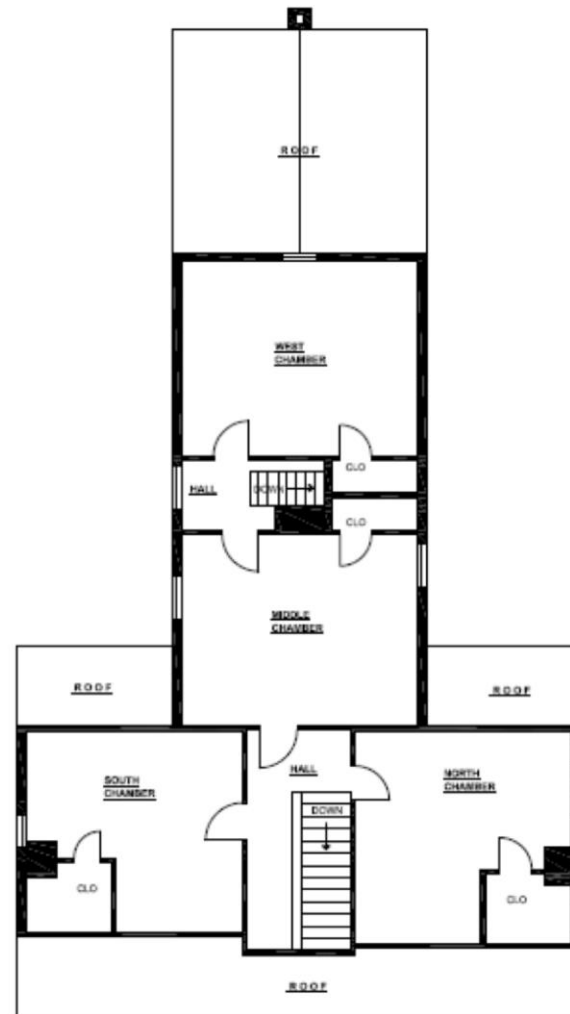
Fig. 9. Helfand house, south elevation. December 2014.

HELFANDS OF DARTMOUTH



FIRST FLOOR PLAN
1380 SQ. FT.

HELFANDS OF DARTMOUTH



SECOND FLOOR PLAN
920 SQ. FT.

HELFANDS OF DARTMOUTH

HELFAND FARM, DARTMOUTH, MASSACHUSETTS

ARCHITECTURAL SURVEY



Fig. 11. The stair is original to the construction of the house; however, it has had some repairs done to it. All of the repairs remain faithful to the original design and have not detracted from the integrity of the piece.

HELFANDS OF DARTMOUTH

HELFAND FARM, DARTMOUTH, MASSACHUSETTS

ARCHITECTURAL SURVEY



*Fig. 13. North parlor, typical architrave found in the room. Note the corner block and compare to the windows shown in Benjamin's, *The Practice of Architecture* (Fig. 4)*

HELFANDS OF DARTMOUTH



Fig. 16. North parlor, mantelpiece. The mantel is a fine representation of an early Greek Revival piece complete with its early faux marble paint finish. The firebox exhibits classic Rumford proportions. Mounts for a crane remain in the masonry of the west splay. Two courses of brick have been added across the opening of the hearth. It is interesting to see that the house employed fireplaces rather than cast iron stoves which were becoming widely available when the house was constructed.

HELFANDS OF DARTMOUTH



Fig. 18. South parlor, south elevation. Features to note include the original closet, built-in cabinet on the side of the chimney breast, mantelpiece, window architrave, surbase (or chair rail), and base (or base board).

HELFANDS OF DARTMOUTH

HELFAND FARM, DARTMOUTH, MASSACHUSETTS

ARCHITECTURAL SURVEY



Fig. 19. South parlor, mantelpiece Compare this element to that illustrated in Asher Benjamin's, The Practice of Architecture, Plate 47 (Fig. 3). While the embellishments differ, the overall composition is very similar.

HELFANDS OF DARTMOUTH



Fig. 22. Kitchen, west elevation. Unlike the parlors which retained fireplaces, the kitchen originally utilized a cook stove which would have plugged into a stove chimney behind the mantel. While there was no functional need for it, mantels continued to be used as architectural elements to frame stoves long after fireplaces disappeared.

HELFANDS OF DARTMOUTH

HELFAND FARM, DARTMOUTH, MASSACHUSETTS

ARCHITECTURAL SURVEY



Fig. 23. Kitchen, east elevation showing the series of five doors. The door at the left of the image was added sometime in the last quarter of the nineteenth-century.

HELFANDS OF DARTMOUTH



Fig. 24. The Gothic Revival arched opening between the kitchen and this alcove appears to be original to the construction of the house and shares architrave profiles found at the door and window openings on the first floor. The Greek Revival and Gothic Revival styles coexisted simultaneously, and occasionally builders employed elements and details interchangeably.

HELFANDS OF DARTMOUTH

HELFAND FARM, DARTMOUTH, MASSACHUSETTS

ARCHITECTURAL SURVEY



Fig. 25. Unlike the stylish treatment of the first floor rooms, the chambers have little in the form of decorative treatments, Doors throughout are board and batten with surface latches.

HELFANDS OF DARTMOUTH



Fig. 26. Detail of a cast iron Blake latch found throughout the second floor level. The design for this latch was patented in 1840.

CRITICAL FACT: FOR DATING THE HOUSE
(Not earlier than 1840)

HELFANDS OF DARTMOUTH



HELFANDS OF DARTMOUTH



HELFANDS OF DARTMOUTH

- CHILDREN OF WILLIAM & ANNIE HELFAND

- IDA b abt 1911
- ESTHER b abt 1915
- FRANCES b abt 1916
- DOROTHY b abt 1918
- MIRVING b abt 1920
- HELEN b abt 1923
- SAMUEL b abt 1927

HELFANDS OF DARTMOUTH

- CHILDREN OF HARRY & GUSSIE HELFAND

- THOMAS b abt 1912

- BARNEY b 23 January 1914

- IDA b abt 1915

- MILTON b abt 1916

- HOWARD b abt 1919

- ARNOLD b abt 1921

- EDITH b abt 1922

- SOPHIE b abt 1923

- SAMUEL b abt 1926

HELFANDS OF DARTMOUTH



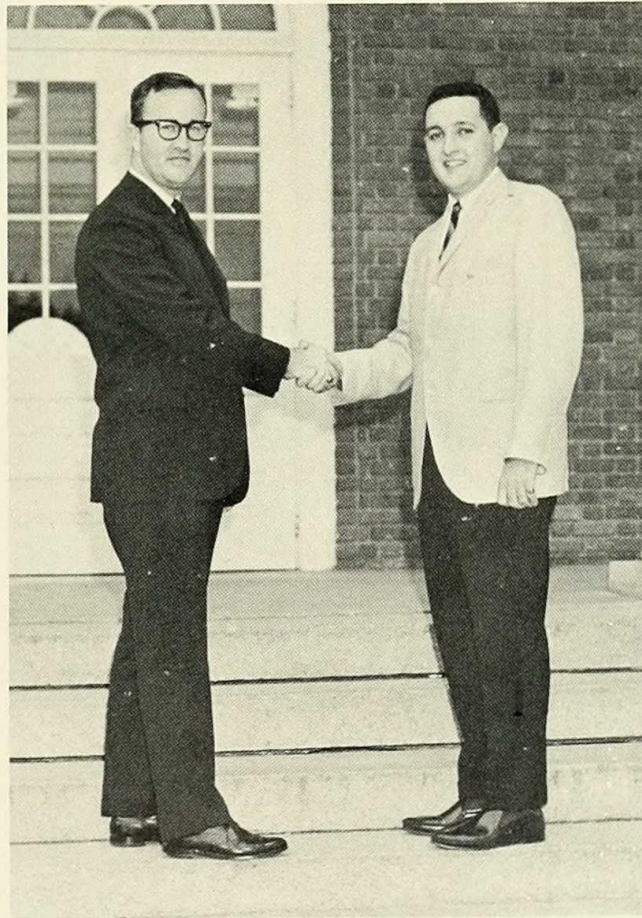
14 Helfand Children on the Farm

FRONT LEFT: MERVIN & ARNOLD

HELFANDS OF DARTMOUTH

BUSINESS CLUB

1953 ELON UNIVERSITY YEARBOOK



Mr. Charles L. Farrar, Executive Director of International Fraternity $\Delta\Sigma\Pi$, is greeted by Arnold Helfand. Mr. Farrar spoke to the club about the possibility of becoming a chapter of $\Delta\Sigma\Pi$.

HELFANDS OF DARTMOUTH



Vintage 1940's HELFAND DAIRY and Flavored Drinks Window Decal - Graphics of Old Milk Bottle - NOS Large Frameable Size 12.5" x 10"



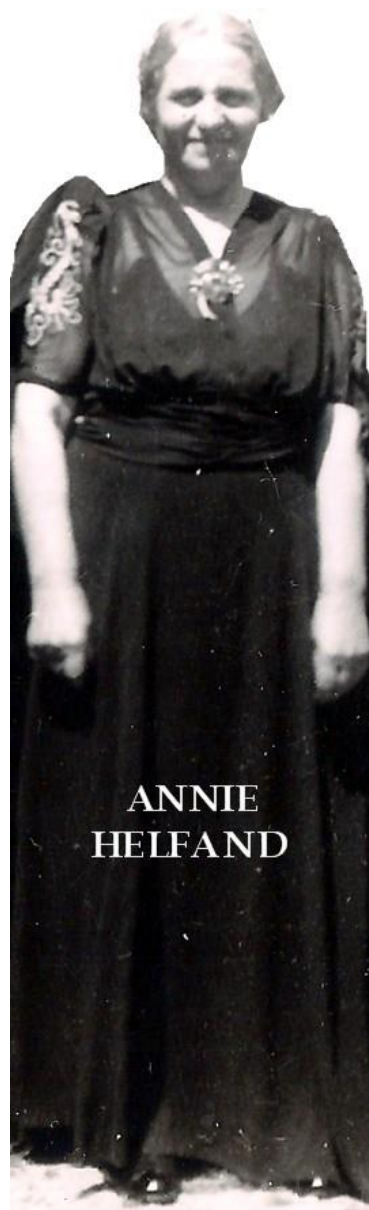
HELFANDS OF DARTMOUTH



Israeli Scouts with Mr. Sam [Helfand](#) at the New Bedford Jewish Convalescent Home

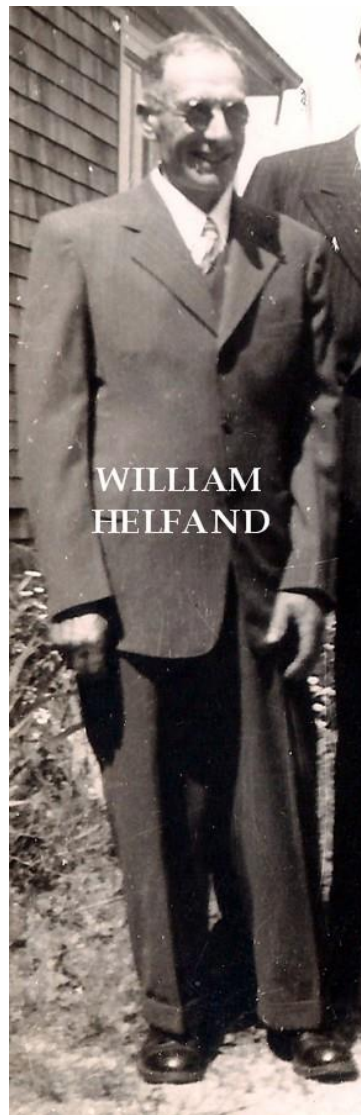
CREDITS: THE JEWISH MESSENGER, 2012

HELFANDS OF DARTMOUTH



ANNIE
HELFAND

HELFANDS OF DARTMOUTH



WILLIAM
HELFAND

HELFANDS OF DARTMOUTH

HELFANDS OF DARTMOUTH



GUSSIE & HARRY HELFAND

PARENTS OF 13

CRDITS: Photo, Edith & Sophie Helfand; Compiler, R E Harding

HELFANDS OF DARTMOUTH



CREDITS: Photo, Edith & Sophie Helfand; Compiler, R E Harding

HELFANDS OF DARTMOUTH

**HELEN, d WILLIAM &
ANNIE**

LOVED CATS



←---- NOTE HOUSE

HELFANDS OF DARTMOUTH

HELEN d WILLIAM & ANNIE

**NOTE THE HOUSE IN
BACKGROUND**



HELFANDS OF DARTMOUTH

**IDA, OLDEST d OF WILLIAM
& ANNIE HELFAND**



HELFANDS OF DARTMOUTH

**SAM, s HARRY & GUSSIE
HELFAND**



HELFANDS OF DARTMOUTH

**MERVIN, s WILLIAM &
ANNIE HELFAND**



HELFANDS OF DARTMOUTH



1988 PHOTO – FAMILY OF HARRY & GUSSIE HELFAND

HELFANDS OF DARTMOUTH



10 OF THE 13 CHILDREN OF HARRY & GUSSIE HELFAND

HELFANDS OF DARTMOUTH

**ANNIE AT THE
BEACH**



HELFANDS OF DARTMOUTH

**THREE OF WILLIAM &
ANNIE'S CHILDREN**

**IDA IN FRONT &
MERVIN NEED HELP
WITH BACK LEFT**



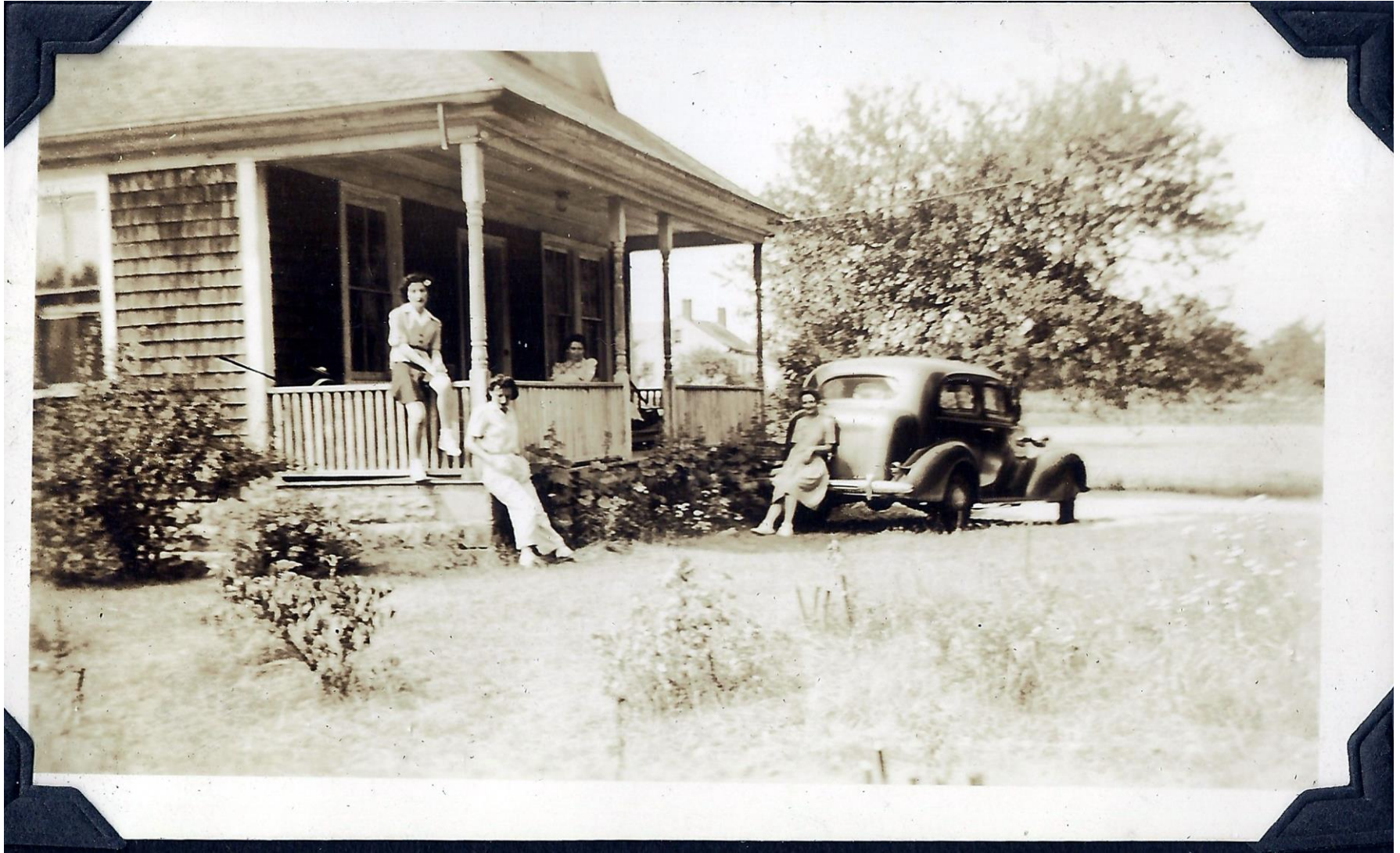
HELFANDS OF DARTMOUTH

GUSSIE HELFAND

**AFTER THE MOVE TO
SLOCUM ROAD**



HELFANDS OF DARTMOUTH



WILLIAM HELFAND HOUSE FRONT ORIGINAL HOUSE IN BACKGROUND

HELFANDS OF DARTMOUTH

WILLIAM HELFAND

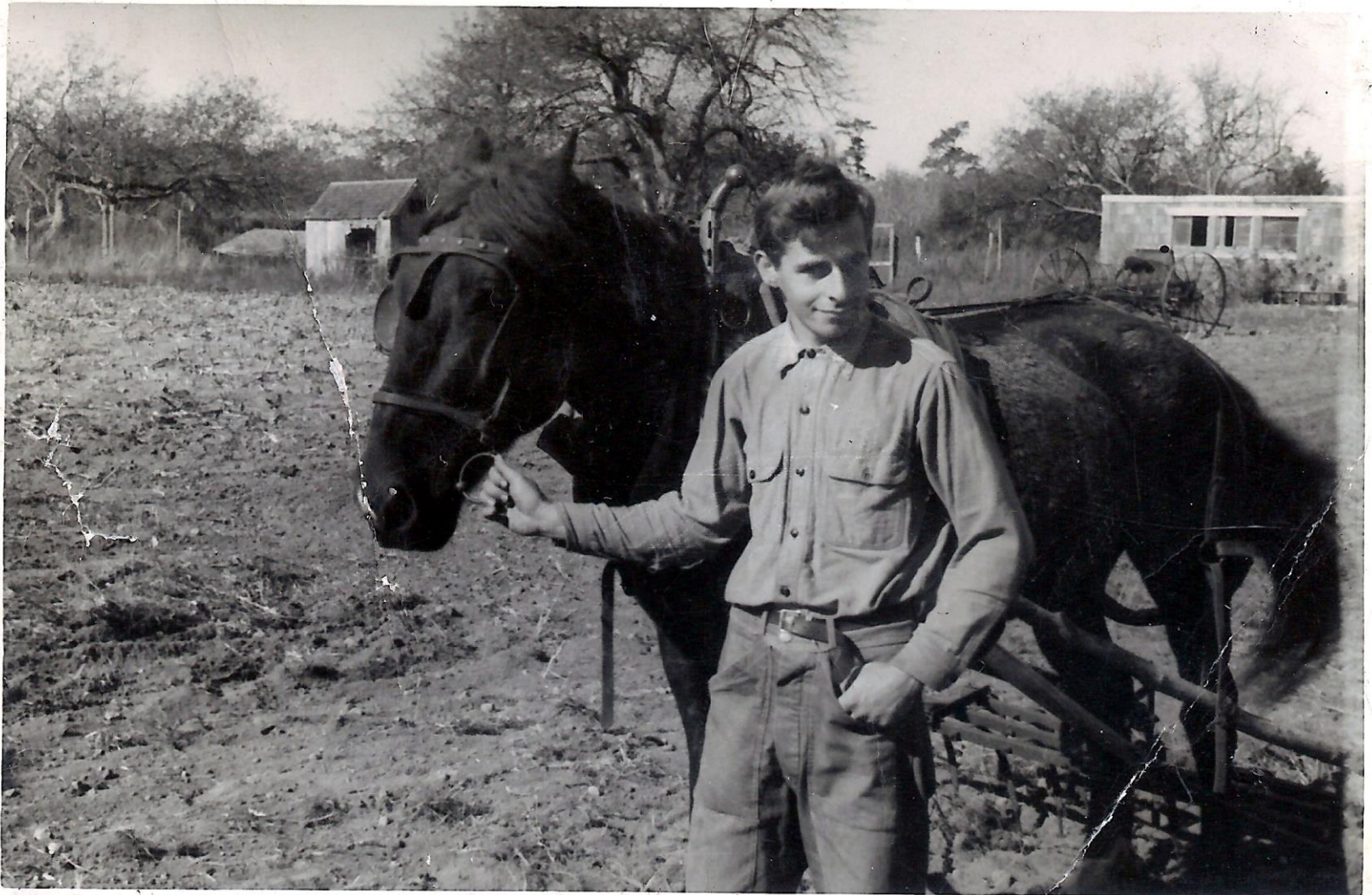


HELFANDS OF DARTMOUTH

SAM, s WILLIAM & ANNIE



HELFANDS OF DARTMOUTH



SAM HELFAND, s OF WILLIAM & ANNIE-AT WORK ON THE FARM

HELFANDS OF DARTMOUTH

WHICH BROTHER IS THIS?



HELFANDS OF DARTMOUTH

**HELEN, d WILLIAM
& ANNIE
IN UNIFORM**



HELFANDS OF DARTMOUTH

IS THIS IDA?



HELFANDS OF DARTMOUTH

IS THIS HOWARD?



HELFANDS OF DARTMOUTH



HELFANDS OF DARTMOUTH

IDA & MERVIN
WERE WILLIAM
& ANNIE'S
CHILDREN

MILTON &
HOWARD
WERE HARRY
& GUSSIE'S

NOT SURE
WHICH SAM
SERVED IN
THE
SERVICE

NATIONAL JEWISH WELFARE BOARD
BUREAU OF WAR RECORDS
MASTER CARD SYSTEM

Ida
Milton
Howard
Sam
Helen
Mervin
~~XXXXXX~~ AWARD MS-6

authenticated

NAME HELFAND Bros. RANK _____ AGE _____
LAST (CAPS) FIRST MIDDLE

NEXT OF KIN Mr. Harry Helfand RELATIONSHIP Father
North

ADDRESS 82 Chase Rd. CITY Dartmouth STATE Mass.

SOURCE OF INFORMATION Letter 10/26/44 from G. Davidson in Helfand
Bros. MS-5 folder

INQUIRY DATE 11/21/44* FOLLOW-UP DATES _____

WORKER CONSULTED _____ FAMILY Helfand families*

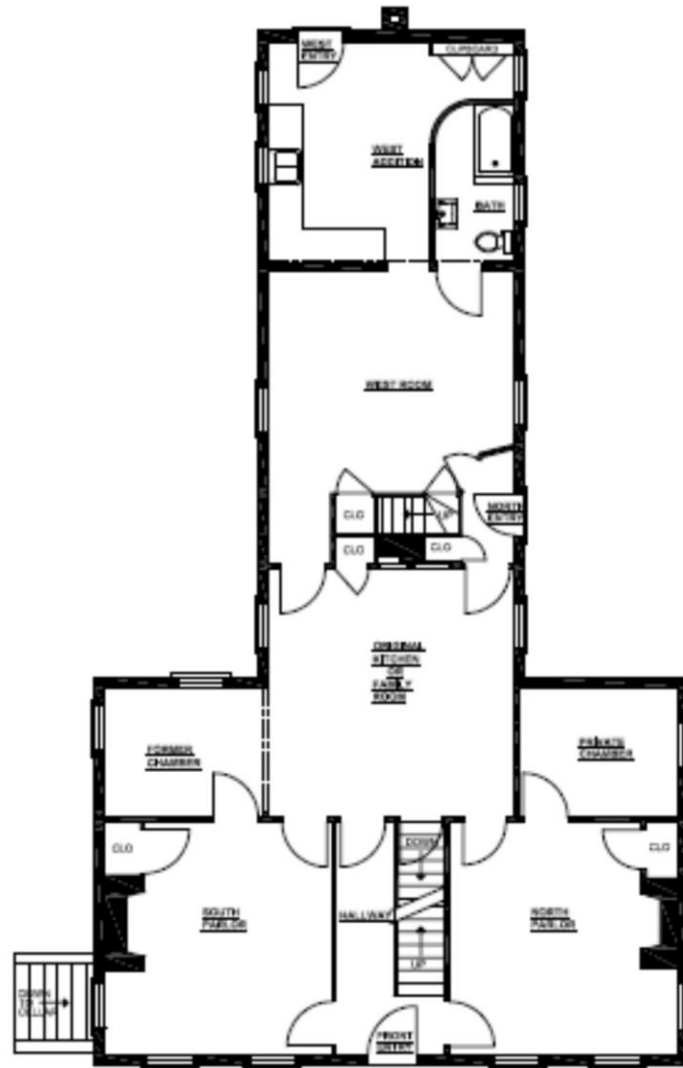
DATE APPEARED IN HONOR ROLL _____ BRANCH OF SERVICE _____

sf

HELFANDS OF DARTMOUTH

- FOR DISCUSSION
- HOW DID THE TWO FAMILIES DIVIDE THE USE OF THE SPACE IN THE HOUSE??
 - FIRST FLOOR
 - SECOND FLOOR
 - DRAWING FROM DON PLANT FOR REFERENCE

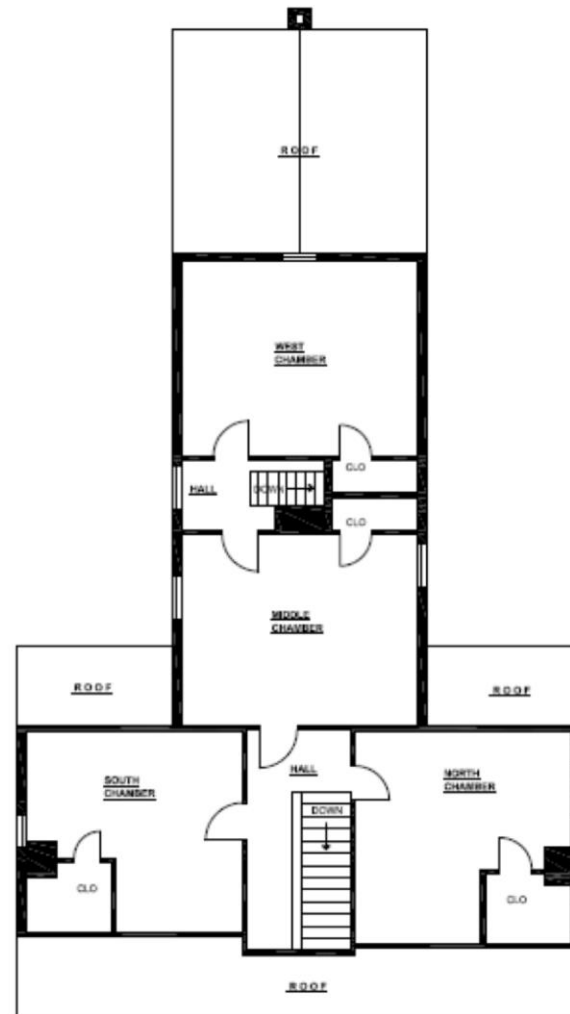
HELFANDS OF DARTMOUTH



FIRST FLOOR PLAN
1380 SQ. FT.

00° 05' 00" N 70° 15' 00" W

HELFANDS OF DARTMOUTH



SECOND FLOOR PLAN
920 SQ. FT.

HELFANDS OF DARTMOUTH

- HOW DID THE TWO FAMILIES DIVIDE THE WORK???
- IN THE HOUSE?
- ON THE FARM
 - IN THE BARN?
 - IN THE FIELDS?

HELFBANDS OF DARTMOUTH

- DO YOU REMEMBER HARD TIMES?
 - ANY SPECIFIC STORIES?

- DO YOU REMEMBER GOOD TIMES?
 - SPECIFIC STORIES?

HELFANDS OF DARTMOUTH

- **TELL US ABOUT SCHOOL & CHURCH**

- CHURCH & SYNAGOGUE

- SCHOOL

- PRIMARY & GRAMMAR SCHOOL

- TRANSPORTATION

- TEACHERS & SCHOOL LIFE

- DARTMOUTH HIGH SCHOOL

- TRANSPORTATION

- CLASSMATES, TEACHERS & SCHOOL ACTIVITIES

HELFANDS OF DARTMOUTH

- HELFANDS IN WORLD WAR II
- TELL US WHO SERVED AND IN WHAT BRANCH OF THE SERVICE

HELFANDS OF DARTMOUTH

- IN THE INTERVIEW WITH GUSSIE, YOUR MOTHER, MANY STORIES WERE REFERENCED
- DO YOU REMEMBER ANY OF THEM?

HELFANDS OF DARTMOUTH

- GUSSIE BROUGHT BAGS OF FEATHERS ON THE TRIP FROM RUSSIA TO THE USA??
- FATHER, HARRY, HAD AN ACCIDENT & LOST A LEG
- HARRY FELL DOWN THE DUG WELL & WORRIED HIS CHILDREN

HELFANDS OF DARTMOUTH

- WHAT ANIMALS WERE ON THE FARM & WHO TOOK CARE OF THEM?
- THE FIELDS ARE NOW FREE OF ROCKS, HOW DID THAT HAPPEN, THIS IS NEW ENGLAND?
- TELL US ABOUT YOUR MOTHER'S BAKING & COOKING
- WE DO NOT KNOW MUCH ABOUT TOM'S DAIRY TELL US ABOUT IT

HELFANDS OF DARTMOUTH

- MORE QUESTIONS OR COMMENTS FROM THE FLOOR??

HELFANDS OF DARTMOUTH

THANK YOU ALL FOR COMING & FOR YOUR
PARTICIPATION

**ALSO THANKS FOR YOUR FINANCIAL
SUPPORT OF OUR PROGRAMS THROUGH
YOUR DONATIONS & YOUR MEMBERSHIP!!**